

# Melcourt<sup>®</sup>

## Professional Growing Media

---

PROVEN • SAFE • SUSTAINABLE

*Neil Gray – Sales Manager*

*Dr. Victoria Wright – Technical Manager*

*Rosy Hardy – Hardy's Cottage Garden  
Plants*

# Melcourt<sup>®</sup>

Professional Growing Media

---

PROVEN • SAFE • SUSTAINABLE

- Landscape / Play
- Grower
- Retail
- Equestrian / Reptile / Poultry / Biofilter







Bishops Castle,  
Shropshire





# A W Jenkinson Forest Products



# Raw material security for growing media

- Bark
- **Sylvafibre**<sup>®</sup> composted wood fibre
- Coir
- Green Compost - organics













**Melcourt**<sup>®</sup>  
Professional Growing Media  
Proven • Safe • Sustainable

# SYLVAMIX<sup>®</sup> PEAT-FREE GROWING MEDIUM

## Sylvamix<sup>®</sup> Potting

An all-round potting mix for a wide range of nursery uses

## Sylvamix<sup>®</sup> Nursery Stock

A free-draining mix for nursery stock and trees

## Sylvamix<sup>®</sup> Natural

A Soil Association approved general purpose mix



## Sylvamix<sup>®</sup> Hanging Basket

A fine, free-flowing moisture-retentive mix

## Sylvamix<sup>®</sup> Seed & Cutting

Ideal for a wide range of propagating applications

## Sylvamix<sup>®</sup> Special

A prescription mix tailored to individual needs



Sylvamix will need supplementary feeding after 4-6 weeks depending upon application.

Contact Melcourt for more information or see [www.melcourt.co.uk](http://www.melcourt.co.uk)

Store in a cool dry place. Re-seal part-used bags. Use gloves when handling and avoid inhaling dust.

For best results use within 6 months of purchase.

Melcourt Industries Ltd Boldridge Brake, Long Newton, Tetbury, Gloucestershire GL8 8RT

T: 01666 502711 • F: 01666 504398 [mail@melcourt.co.uk](mailto:mail@melcourt.co.uk) [www.melcourt.co.uk](http://www.melcourt.co.uk)

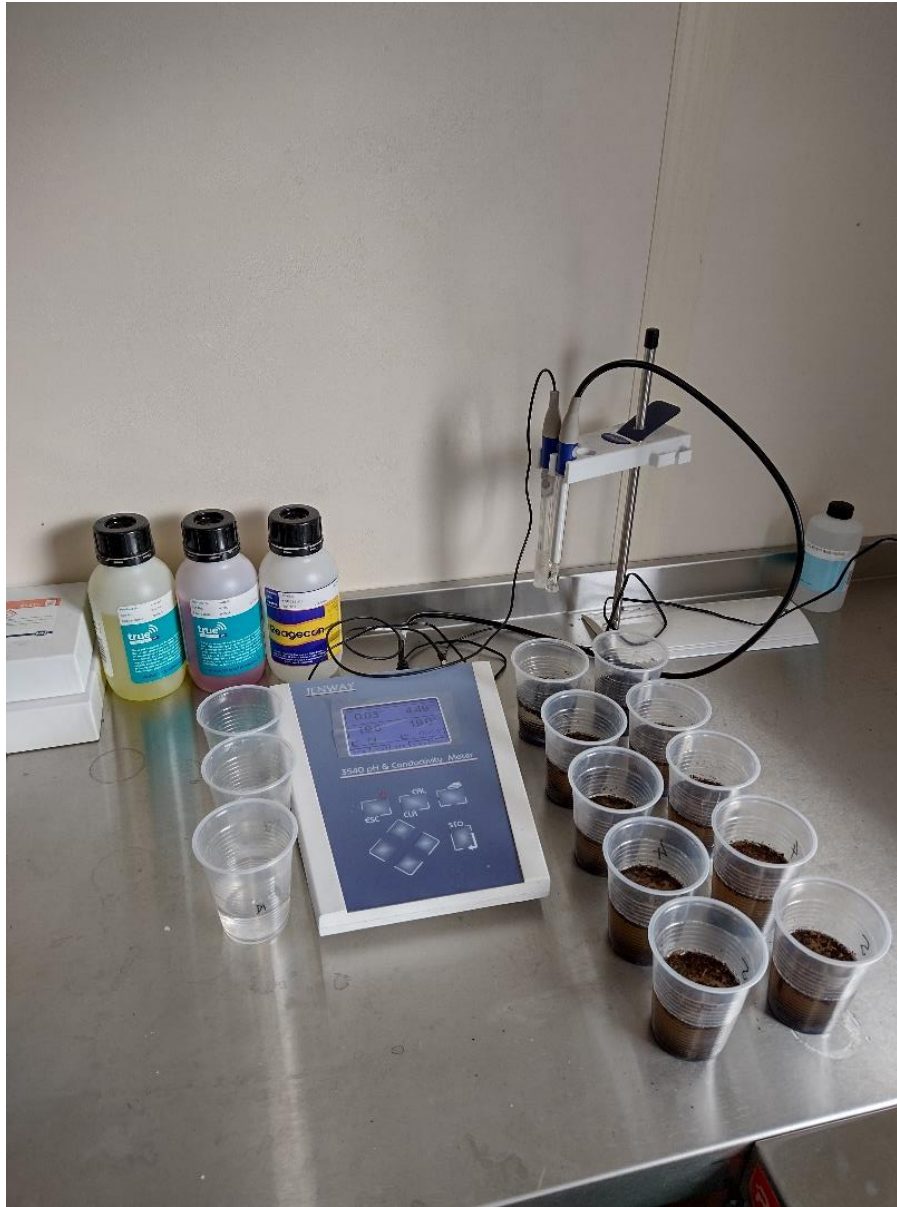


\* This pack has been filled in accordance with the Growing Media Association Code of Practice for Quantity Measurement, Pack Filling and Volume Declaration. Volume may reduce by up to 10%. Further information available from [www.growingmedia.co.uk](http://www.growingmedia.co.uk)

21 years old  
this year

**Melcourt**<sup>®</sup>  
Professional Growing Media

PROVEN • SAFE • SUSTAINABLE





# Royal Warrants



BY APPOINTMENT TO HER MAJESTY THE QUEEN  
SUPPLIER OF HORTICULTURAL PRODUCTS  
MELCOURT INDUSTRIES LIMITED  
TETBURY



By Appointment to His Royal Highness  
The Prince of Wales  
Supplier and Manufacturer of Peat-Free Organic  
Growing Mediums  
Melcourt Industries Ltd  
Tetbury

# Melcourt<sup>®</sup> Industries Limited

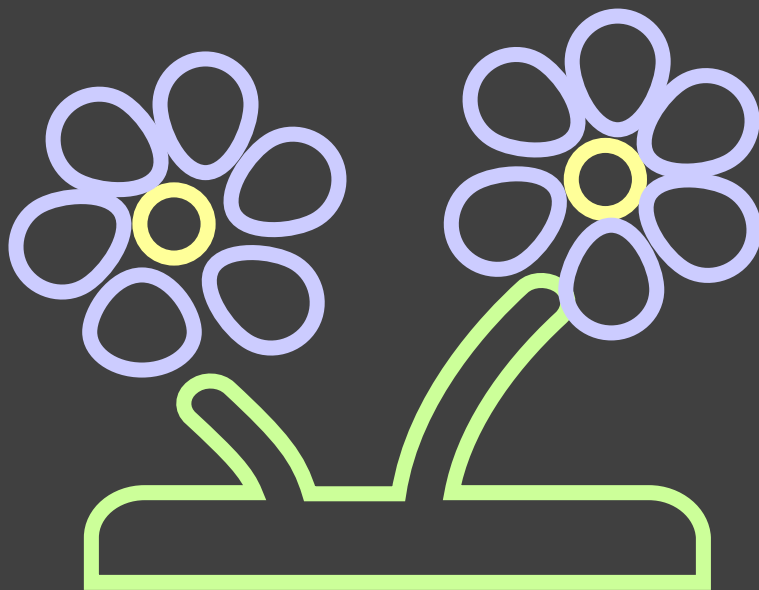


[www.melcourt.co.uk](http://www.melcourt.co.uk)



@SylvaGrow





RHS Transition to peat-free and sustainable growing conference

20 November 2023

Melcourt &  
Hardy's Cottage Garden  
Plants

Rosy Hardy.  
Hon. Vice President  
RHS  
Floral Panel Judge



A little bit about us...

Hardy's Cottage Garden Plants- Founded in 1988

We specialise in growing herbaceous perennials older and newer varieties very much cottage garden style.  
We list over 1,200 varieties.

The nursery is in Test Valley, Hampshire, the site is exposed very windy and in a rain shadow.  
All plants are container grown either 1litre or 3 litre.  
Our plants are grown outdoors and are not forced on giving us a natural season of growth

We have our own propagation unit producing over 40,000 young plants per year. We also do divisions of older plants increasing this propagation further.

24 RHS Chelsea gold medals and multiple RHS and other awards  
Awarded RHS Master Grower Status in 2021



*Oenothera*  
'Rosyjane'



*Anemone*  
'Frisly Knickers'



## Our journey to peat free

The Catalyst for starting to go peat free came when Avoncrop our horticultural supplier went into administration

This meant we had to find a potting medium supplier.

We had one mix that had brick pieces and all sorts added in which was not brilliant or consistent. Quickly changing to Westlands 50:50 Woodpulp:Peat mix, until they no longer offered to deal with trade. (we had started to trial Melcourt at this time)

Then in the latter part of 2011 we started to change over to Melcourt Sylvagrow bulk bags. Initially we used this with our lower fertilizer rate that we had previously used with peat based medium, as we prefer our plants to be hard grown not too lush. This was the start of the learning curve.

By 2012 we had moved all of our potting production to Melcourt Sylvagrow. The transition for plants on the nursery to all being potted took about 2 years and then we just said we were 100% potted on in peat free.

We have never said we are totally peat free until 2023 when all of our propagation became peat free



Using MELCOURT – changes to our production methods

Watering management

We use overhead sprinkler irrigation, and found that morning and evening watering was the best solution, so the same amount of water but split over two time periods.

Feeding management

Initially we used our old fertiliser rates from peat based composts.

This however was not good enough as a percentage of the fertiliser was being utilised by the bark.

We have had to increase the amount within our mix and occasionally adding an extra top dressing manually on specific crops.

We grow our stock outside in containers and are aware that rooting down can take longer, seasonal variations are also large factors. We maintain older rooted stock for early spring sales for this reason. Very young plants from over wintered cuttings are protected in cold polytunnels until rooted.



Benefits of being peat free

Preferred supplier status: National Trust

Preferred exhibitor at RHS shows

New relationships built with other nurseries wanting to transition to peat free by exchanging knowledge

We are always looking at our growing practices and are able to change some of these as required especially within our propagation area.

Also timing of repotting, our practices have changed slightly over the years, not all of this has to do with the potting medium it can just be circumstances.

As growers who try to be as environmentally aware as we can be, there will I'm sure be new challenges to come in the future.



*FW*  
FIONA WALSH  
PHOTOGRAPHY