



2024 RHS FLOWER SHOW TATTON PARK LONG BORDER EXHIBITORS

Please note: This information is subject to change. For images and further information including full planting lists, please contact showspr@rhs.org.uk

1) *The Harmony Arch*

Designer: Samuel Galloway

Community Group: Ashley Walled Garden in collaboration with Lancashire LGBT and Manchester Pride

Media Contact Name: Samuel J Galloway

Media Contact Details: samgalloway2001@gmail.com / 07977276878

The Harmony Arch border is a vibrant celebration of LGBTQ+ identities through the medium of gardening. Visitors will experience an array of colourful plants and flowers, and a fragmented wicker arch artfully arranged to create an immersive garden. The design symbolises the journey of discovering and embracing one's identity, inspired by personal experiences within the LGBTQ+ community and a deep appreciation for the natural world. The border incorporates sustainable materials, reflecting the resilience and diversity of the LGBTQ+ community and its harmonious connection with nature.



Planting and colour scheme

The planting is thematic, with a vibrant colour scheme. *Calamagrostis x acutiflora* 'Overdam' stands tall, embodying pride. Chinese meadow rue is chosen for its unique and airy flowers, symbolizing openness, and the interconnectedness of community.

Relocation

The Harmony Arch will relocate to Astley Walled Gardens, offering a serene space for visitors to reflect on LGBTQ+ history and become part of a supportive community.

2) *Be Bold and Beautiful*

Designer: Samantha Stringer

Media Contact Name: Samantha Stringer

Media Contact Details: samanthaanniestringer@outlook.com / 07487780944

Visitors will be greeted with a bold sea of pink when they visit this striking border. The planting features a complimentary array of plants, designed so that there is something in the

border that every visitor can relate to. Whether it be the plant species, colour, height or impact of the plants, the designer hopes to inspire others to recreate the border planting for themselves. The garden incorporates statement metal heart stakes, reflecting the borders message to celebrate yourself.



Planting and colour scheme

The planting is deliberately dense, with a mass of pink flowers, such as dahlia, delphinium and cosmos.

3) To Have and To Hold

Designer: Emily Barden

Media Contact Name: Emily Barden

Media Contact Details: emily.bardensgardens@gmail.com / 07500834125

This border has been designed to celebrate ten years of same-sex marriage in the UK. The focal point of the border is a stunning moongate, representing the wedding ring of commitment and a door to new beginnings. This structure will be surrounded by a rainbow of planting, designed to emulate the Pride flag. The plants have a wide variety of different shapes and forms, to reflect the diversity of the community, and many of the plants are traditionally used as wedding flowers.



Planting and colour scheme

The colour scheme features all colours of the rainbow, to reflect the diversity of the LGBTQ+A community and the spectrum of human sexuality and gender.

4) The Mid Cheshire Community Rail Partnership: The Mid Cheshire Line Station Volunteers' Garden

Designer: The Mid Cheshire Line Station Volunteers

Sponsor: The Mid Cheshire Community Rail Partnership

Media Contact Name: Sarah Muir

Media Contact Details: sarah.muir@midcheshirerail.org.uk / 07825815442

This border is inspired by the Mid Cheshire Line railway, with its music trains that provide entertainment for passengers while they travel, and the line itself, which is a haven of plants, shrubs and trees. From the world outside, depicted on the border by low-level monochrome planting, travellers enter the colourful world of the railways. In the centre of the border, a railway trolley loaded with vibrant blooms represents souvenirs from distant destinations. A sequence of grasses interspersed with verbena leads the eye towards the railway track, with an adjacent herb area where travellers can 'pick their own'. Planting around this track includes



cultivated and wild varieties of common self-seeding plants and represents how nature takes over.

Planting and colour scheme

Plants have been chosen for their low-maintenance and resistance qualities, and some plant names even reference travel or music.

The colour scheme is that of the local train operator: purple, blue and yellow.

Relocation

The border has been created by many volunteers along the Mid Cheshire line, so plants will be distributed between all the stations along the line to be included in the gardens.

5) Growth Begins With Reflection

Designers: Victoria Bettany, Eloise Wood, Sophie Wiseman
Sponsor: Wyevale Nurseries, University of Gloucestershire

Media Contact Name: Victoria Bettany

Media Contact Details: victoriabettany@icloud.com / 07575776679

Inspired by the work of Frida Kahlo, this thought-provoking long border explores the effects that the pressures of social media have on mental health. The primary theme of the garden is self-reflection. In order to express this theme alongside the designers' exploration of the trials and tribulations by Kahlo, the garden is split into two sections: expression and repression. When you first look at the border, the contrast in the planting of these sections is striking, but as visitors walk around the garden and take in the frames and mirrors strategically placed within it, it will become evident that there is an element of reflection within the space, echoing Kahlo's own reflection within her works.



A 'red ribbon' of vibrant *Astilbe* 'Fanal' is a key element of the garden as it ties both sides of the design together, representing how Kahlo's red ribbon ties her to the emotions within her paintings. These plants were chosen for their height and bold colour.

Planting and colour scheme

The 'repressed' section of the garden features a dark colour scheme to represent the repressed emotions we all have within ourselves, with plants such as *Hebe* Claret Crush and *Heuchera micrantha* Palace Purple. From the 'expressive' side of the garden, a colour scheme of pinks, oranges and yellows is created with the use of *Geranium x oxanianum* 'Wargrave Pink' and Russell group lupins.

Relocation

After the show, all the plants will be sold or donated.

6) The Staffordshire Puppet Tree: It's a Family Affair – Family Gardens are the Future

Designers: Sarah Watson and Michael Leech
Sponsor: The Staffordshire Puppet Tree, Notcutts Garden Centre

Media Contact Name: Sarah Watson
Media Contact Details: sezw@yahoo.com / 07842231692

This garden is a colourful and bold display of family favourite plants. All the plants will be edible and attractive, making them ideal to grow in a family garden. This display is designed to be motivational and energetic, to inspire families to nurture family relationships by gardening together as a pastime, whilst positively contributing to the environment and learning how to work with climate change. Key features of this garden will be the dahlias and the doll's house.



Planting and colour scheme

The colour scheme of this garden is bright and bold, with a pastel-colour area to suit all tastes. The planting is entirely edible, with a cherry tree, blueberry bushes, an assortment of vegetables and herbs, and edible flowers. Dahlias have been chosen for their colour and texture, while *Acmella oleracea* will feature as an unusual edible plant with a rare appearance.

Relocation

The plants are being donated to a 'pick your own' community long border at Clyde House in Ashton-under-Lyne, Greater Manchester for the charity 'LEAP' family centre.

7) Melting Pot

Designers: Elizabeth Broadbent and Tom Orton

Media Contact Name: Elizabeth Broadbent
Media Contact Details: liz@gardenwild.net / 07455220779

This border has been designed to make a visual statement about the beauty and vibrancy of the cultural melting pot in the UK. Gardens have always reflected the cultural direction of society and this one is no different, as it celebrates the current culture of borderless social connections and the unprecedented interconnectedness of different communities. A copper wire sculpture with the border represents the lines of communication which connect and divide us. It has been subtly woven through the planting to create the sense of partitions, whilst allowing the viewer to explore the planting behind.



Planting and colour scheme

This 'melting pot' has been represented within the garden's planting scheme with the juxtaposition between the structural planting with its strong forms and colours, and the softer shapes and cooler colours of the filler plants. This creates a contrasting but complementary aesthetic. The complicated mix of colours, varieties and plant origins from bold phormiums and striking *Catalpa*, to delicate English roses and irises reflect the shift towards a new cultural identity, composed of a patchwork of cultural elements.

Relocation

The planting is being relocated to a Victorian manor house in the Yorkshire Dales.

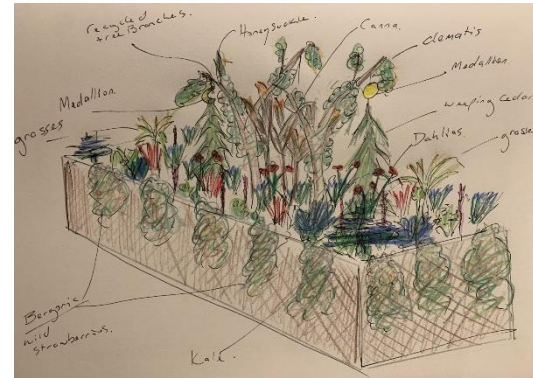
8) The WOW Factor Garden

Designer: Alexander Wright

Media Contact Name: Alex Wright

Media Contact Details: alwright2021@yahoo.com / 07484910439

The WOW Factor Garden is a riot of colour, shape and variegated textures which creates a rich tapestry and haven for wildlife. Designed to express the height of an English cottage garden, the garden forms a wave of rhythmic colour. Flowing *Begonias*, *Digitalis* and *Allium* give way to an edifice of *Dahlia*, *Salvia* 'Amistads' and *Astilbes* which build in height, drawing the eye to the centre pillars of flowering climbers surrounding a *Canna* lily. Birch branches have been used to form a trellis and edible plants have been integrated into the garden alongside classic garden flower varieties. The designer hopes to illustrate how anyone can bring colour, wildlife and vibrancy into their garden.



Planting and colour scheme

The colour scheme is bright and bold with the colours of high summer, from oranges, vermilions and reds to violets and dark greens. This has been designed to mirror the golden sunsets of late July.

Relocation

The plants will be donated to a local school.

9) Deer O Deer

Designers: Alice Meacham and Trudi Robson

Sponsor: British Deer Society, Garden Art and Sculpture, Rainbow Plants

Media Contact Name: Alice Meacham

Media Contact Details: alice.meacham@hotmail.com / 07808585682

In this garden, two abstract steel sculptures represent deer browsing in a space full of colour, texture and foliage. It has been designed to demonstrate that cultivated spaces don't have to be exclusive, fenced off sites. While no plant is truly graze-proof, there are plenty of robust plants that are more robust in response to wildlife. This garden aims to encourage people to think beyond flowers, to consider trees, shrubs and grasses to create seasonal interest. By reconsidering plant choices, it is possible to achieve the right balance between human and wildlife needs.



Planting and colour scheme

The colour scheme features rich reds, golds and deep purples. The planting scheme is naturalistic, and features ornamental grasses like *Miscanthus sinensis* 'Gracimillus', and *Phormium* 'Platts' Black' with a dramatic purple-black foliage that provides the perfect foil for

these autumnal grasses. The garden also features an *Acer palmatum* 'Bloodgood', with beautiful red leaved foliage which has been browsed by deer on its lower branches, lifting the canopy to enable plants to grow underneath.

Relocation

The border will be relocated to the wholesale nursery entrance carpark.

10) Inner City

Designers: Melanie Donovan

Sponsor: J. Parker's Bulbs

Media Contact Name: Melanie Donovan

Media Contact Details: melanie.donovan@sky.com / 07595844983

This garden has been inspired by the changing skyline of Manchester. As space is often at a premium in cities, this garden demonstrates how a small border can be created sustainably, to provide a habitat for local wildlife, and a place to improve our mental and physical health. Seven metal obelisks reflect the city's skyscrapers, towering above the planting scheme to provide a focal point, structure, and height to the design. Pollinator friendly plants have been chosen to encourage biodiversity.



Planting and colour scheme

Various plant heights and structures have been chosen to add softness to the stark towers directing the eye around the border, creating a mindfulness and a welcome contrast to the busy city.

A colour scheme of pinks, purples and yellows provide a warmth and brightness against the cold metal of the towers.

Relocation

The border will be relocated to the Oldham Hospital, where it will serve as a staff wellbeing area.

11) Authenticity

Designer: Cara Gaffney, Kaci Purnell, Katie Bishop

Sponsor: Wyevale Nurseries

Media Contact Name: Cara Gaffney

Media Contact Details: caragaffney@live.co.uk / 07712200365

Visitors to this long border will discover a vivid tableau of flora that celebrates the unique beauty of individuality within a cohesive community. Themed around self-expression and human interconnectedness, the border features an array of plants that range from the robust to the refined, each chosen for their



distinctive characteristics. The design crescendos towards a central, eye-catching 'explosion' of vibrant colours and textures, spilling with character and personality. An interwoven willow ring encircling the fiery heart is representing the unity and strength found in both diversity and the practise of living as one's authentic self. The design was inspired by the concept that, much like the varied plant species within this border, humanity thrives on mutual respect and understanding.

Plants and colour scheme

This border includes a variety of statement plants chosen for their distinctive, eye-catching qualities. Notable among these are *Fatsia japonica* 'Spider's Web' and *Thalictrum* SPLENDIDE WHITE 'Fr21034'

These plants are integrated to create a vivid display that progresses from cool, monochromatic edges with hints of violet and blue, to a warm, passionate centre filled with reds and oranges.

Relocation

The plants from this border will be rehomed in a variety of different places.

12) Smashing Borders

Designer: Sam Dryell and Joel Loader

Media Contact Name: Sam Dryell

Media Contact Details: samueldryell@outlook.com / 0752 1343741

Smashing Borders is a visionary garden border, which transforms hard landscapes into lush, climate-resilient landscapes capable of managing intense rainfall. Rooted in recycling and repurposed waste materials, visitors are encouraged to smash and reuse hard surfaces, to foster free-draining gardens. Crafted from recycled materials, cured gabion walls offer habitat and structural interest. Small pools of water, made from recycled concrete aggregate, enhance aesthetics and wildlife habitats, emphasise water conservation and biodiversity. The substrate, composed of crushed aggregate on top and a coarse sand and soil mix below, supports healthy plant growth while increasing drainage, minimising flood risks.



Inspired by sustainable gardening, *Smashing Borders* celebrates green spaces' transformative power in mitigating environmental challenges, adapting to increased temperature and rainfall. It aims to inspire eco-friendly landscaping, envisioning a greener, more resilient future for our hard spaces and the environment.

Planting and colour scheme

The planting scheme features 100% drought-resistant species suitable for full or partial sun, with a *Rhus typhina* tree providing dappled shade.

While there isn't a strict colour scheme, the planting does reflect a naturalistic and diverse palette, incorporating hues of white, pink, purple, orange, and greens.

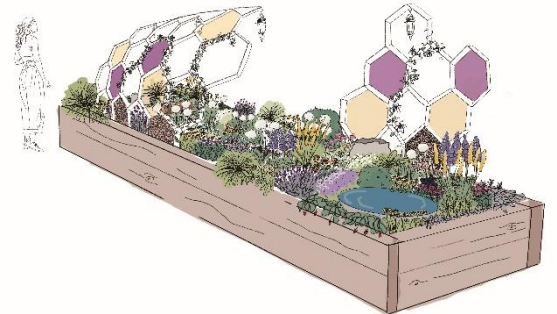
13) Nectar Nook

Designers: Megan Chopp, Phoebe Hunt and Ayomide Palmer

Media Contact Name: Megan Chopp

Media Contact Details: choppmegan@gmail.com / 07770918765

The *Nectar Nook* border has been designed to facilitate the movement and sustenance of pollinator species. Emphasising a small space with significant impact, the design integrates pollinator-supporting elements like shelters, burrow sites, and *Fragaria* for nourishment. The selection of plants, particularly those in the ultraviolet colour spectrum like *Eremurus robustus*, *Allium*, and *Lupinus*, is intended to attract pollinators, complemented by visual interest from *Stachys byzantina*, *Hakonechloa*, and *Heuchera*. The hexagonal structure offers a pollinator-centric view, accentuating colours that appeal to pollinators. Notably, the design accounts for nocturnal pollination, leveraging scented plants and soft lighting to attract efficient night pollinators.



Planting and colour scheme

The colour theme is based on the ultraviolet colour spectrum, incorporating planting that ranges from yellow to purple, as these plants are the most attractive to pollinator species.

Relocation

The plants will be donated to a local community garden for use after the show.

14) The Dry Garden

Designer: Leo Holmes

Media Contact Name: Leo Holmes

Media Contact Details: Leoholmeshort@outlook.com / 07428445585

The Dry Garden is a sand and gravel garden, with plants that are resilient to both the hot dry summers and the increasingly wetter winters of the UK. The five inches of sharp sand provide drainage in winter to protect the crowns of plants from rotting off, while maintaining moisture and cool root run in hot spells. This border has been designed to make a statement about our changing climate and how we can tackle this issue. It demonstrates a new way of soil preparation and exhibits plants used to help with the increasing weather extremes.



Planting and colour scheme

The planting consists of mainly two ornamental grasses, one lower *Sesleria autumnalis* and taller *Molinia* 'Edith Dudszus' which create a matrix for the perennials to run through. The perennials are mainly low growing with the occasional tall self-seeding plant. The garden also includes a shrub layer, to add structure.

The colour palette features soft pinks and purples.

Relocation

All plants will be sold or incorporated into the designer's new projects.

15) Rachie's Pretty Plants and Gardens: A Way With Words

Designer: Rachel Barber

Sponsors: Rachie's Pretty Plants and Gardens, C F Psychology, Etherow Stone

Media Contact Name: Rachel Barber

Media Contact Details: Rachel-barber@hotmail.com / 07889882437

This border has been designed to raise awareness about dyslexia, and features 'stepping stones' with carvings of ambigram words to reflect the struggle of reading when dyslexic. These stones are surrounded by a mixture of herbaceous planting, with predominantly shade tolerant plants that will sit beneath two birch trees. *Geranium* 'Gerwat' ROZANNE, a prolific flowering plant with tumble over the edge of the border, and taller sun-loving perennials will sit between the two trees.



Planting and colour scheme

The colour palette is a mix of greens, white and purples, with dashes of pink.

Relocation

The majority of the plants will be gifted to the designer's allotment society.

16) Barbie says 'Women can be anything they want.' (On the Shoulders of Giants)

Designer: Susan Booth

Media Contact Name: Richard Jackson

Media Contact Details: richardcj5000@gmail.com / 07890262621

This garden is a modern take on a traditional rose border in which all of the plants are commonly known by 'girl's' names. The diagonal axis of the border is three standard roses underplanted with *Veronicas*, *Nerine* and spring bulbs, and eccentrically planted in discrete circular beds clad in rose-pink mirror mosaic. The centre of the border is planted with purple, white, green and yellow plants, and the border is edged with bright pink planting, a colour associated with the Barbie doll.

Planting and colour scheme

The garden features a packed planting scheme, which is designed to look exuberant and lush, with four varieties of rose, including the *Rosa BARBIE MELLA* (Mella Series).

The colour scheme features 'Barbie' pink along the edges of the border, and the purple, white, green and yellows in the centre of the garden are designed to reflect the colours of the Women's Suffrage Movement in the UK and USA.



Susan Booth ©
Cottage
Titch 2004
10 February 2004

17) A Gourd Time

Designer: Harry Dean with Over Allotments

Sponsors: Acorn Landscape Services, Atlantic Timber, Bluebell Cottage Nursery, Steel and Scape, Cliff Dickenson and Son

Media Contact Name: Harry Dean

Media Contact Details: Harrypauldean@gmail.com / 07951071460

The central motif of *A Gourd Time* is edible and ornamental planting that represents a pumpkin thriving in a vegetable patch. Reinforcing the idea of fork to plate, the concept behind the border can be summarised with two words: harvest and habitat. *A Gourd Time* is designed to unify and is particularly interested in exploring human to nature interaction. The design is inspired by a record-breaking giant pumpkin, grown on the designer's allotment site in the 1990s. The very best squashes will be exhibited on this border, alongside popular vegetable climbers and ground cover plants.



Planting and colour scheme

The planting scheme in the space is designed to be both attractive to the naked eye and beneficial to pollinators.

The garden has a colour palette of glowing yellows, vibrant reds and smoky oranges with lush green foliage.

Relocation

The designer is working with Winsford Town Council to relocate the border to the Over Recreational Ground.

18) The Not-So Great Escape AKA The Future English Landscape Garden

Designer: Alex Law

Media Contact Name: Alex Law

Media Contact Details: alexandermlaw@gmail.com / 07708399047

This border weaves together familiar and cherished ornamental plants in a semi-naturalistic style, with the single key feature of a collapsing fence to illustrate their escape into the wild. The majority of the plants in our gardens are non-native and contribute to an abundant ecosystem that is great for humans and wildlife, but a small number have escaped gardens and naturalised in the countryside. Of these, a small minority pose a threat to native biodiversity, while others cause problems for infrastructure, agriculture, and forestry. As our climate changes it is likely that more of our favourite ornamentals will establish wild populations and gardeners need to be mindful of the potentially problematic ones. This border takes a few of these, combined with more well-behaved species and cultivars, with the aim of promoting good horticulture and environmental stewardship.



Planting and colour scheme

The border has been planted in a semi-naturalistic style, and this has also been reflected in the colour scheme.

Relocation

The plants will be sold off at the end of the show, with all profits donated to the charity Horatio's Garden.

19) Temporal Bloom Odyssey

Designers: Bayley Blyther, Ashley Woollaston, Jessica Richardson

Visitors to this border can expect a captivating journey through the narrative of time and change. The border's theme revolves around the passage of time, with key features representing the past, present, and future. Inspired by the designers' collective interest in environmental stewardship and storytelling, the border showcases a harmonious blend of plantings and structures. From weathered wood and charred metal portals symbolising the past, to sleek, minimalist designs evoking the uncertainty of the present, each element invites reflection on humanity's relationship with nature. Vibrant blooms and abstract textures herald the future, celebrating the resilience and potential of life. Overall, the border serves as a visual ode to the ever-evolving tapestry of time, inviting visitors to contemplate their role in shaping the world around them.

Planting and colour scheme

The key plants selected for the border were chosen to represent each respective time frame with their colour, texture, and form. For the "past" section, *Heuchera* 'Dark Beauty' was chosen for its dark, dramatic foliage, evoking a sense of historical reverence and solemnity. In the "present," *Carex testacea* 'Prairie Fire' and *Stipa tenuissima* were selected for their vibrant hues and flowing, grass-like forms, symbolising the dynamic nature of the contemporary moment. Looking towards the "future," *Ceanothus thyrsiflorus* and *Euphorbia characias* were chosen for their bold colours and architectural structures, reflecting the optimism and innovation associated with times to come.

20) Small Actions, Big Impact

Designer: Olivia Copley

Sponsor: University of Sheffield

Media Contact Name: Olivia Copley

Media Contact Details: oliviarosegardens@hotmail.com / 07876802952

This garden seeks to inspire and unlock the potential of the urban front garden. By recognising that small spaces when planted with an array of different plants and trees can have a big impact. A row of urban terrace housing has a significant amount of unrecognised potential to boost ecosystems within a city, and small front gardens can add up to create large green corridors. The impact on people and their wellbeing is also significant.

A reclaimed brick pathway leads the eye to an archway mimicking the appearance of a front door which is the central



feature of the garden. This archway represents the potential of a garden to be rich in biodiversity, colour and interest.

Planting and colour scheme

The planting is loose and airy and contains plants which are pollinator-friendly. The grasses give movement and depth and act as a permeable visual barrier, and the border also has planting suitable for light shade, full sun and rain.

The colour pallet mixes warm oranges and deep reds with bright bursts of yellows, whites and fresh greens, in order to be visually appealing to the human eye and wildlife.

Relocation

After the show, the plants within the garden will be distributed to family and friends for them to add to their own gardens, reiterating the designer's desire for this garden to 'make an impact' regardless of how small the action is.

20) Nature and Modernity

Designer: Tom Pilgrim

Sponsor: Fine Art Source

Media Contact Name: Tom Pilgrim

Media Contact Details: tomgpilgrimdesign@gmail.com / 07803464551

This border proposes a contrast and juxtaposition between modernity and nature, with a contemporary minimalist metal sculpture, set against a tapestry of colourful and textural planting. The sculpture is comprised of clusters of hexagonal columns, symbolising the hexagonal pattern prevalent in nature, such as the honeycomb structure or volcanic rock formations. The sculpture is positioned amidst a vibrant backdrop of bright structural planting, which emphasises durable herbaceous perennial plants which support pollinators.



Planting and colour scheme

The planting scheme for this garden is thematic, with lots of structure and vibrant colours. Achillea and Echinacea are two of the key plants in this scheme and have been chosen for their strong vertical structure.

20) The Samaritans Mid Cheshire Branch: A Listening Ear

Designers: Lesley Groves, Natalie Meara, Tom Meara

Sponsor: Samaritans Mid Cheshire (Northwich) Team Leader Lauren Colville

Media Contact Name: Lesley Groves

Media Contact Details: lesley@grovesfam.com / 07881546797

This border is based on the anatomy and function of the ear. Plants will be arranged in sweeping alternating waves along the length of the garden with hard landscaping at either end. One side of the border will have a water feature with a central metal sculpture, while the other end features a spiral gabion insect hotel. The water feature comprises a simple bowl to represent the ear drum with metal sculpture representing the semicircular canals. The grasses represent the hair cells within the cochlea, while the ripples on the water represent the beginning of the transmission of sound as it travels towards the cochlea. The silver birch adds height and elegance, and its branches mimic the branches of the auditory nerve.

Planting and colour scheme

This border combines simple planting with a muted colour palette of green grasses punctuated by white blooms.

Relocation

The border will be relocated to Thorn Cross Open Prison in Warrington, where it will offer a place of sanctuary for conversation.