

Bold geometric lines meet naturalistic sustainable design

Cambridgeshire designer Tim Jennings demonstrates that eco-friendly choices and contemporary design needn't be an either/or in his garden *A Four Season Sanctuary* displaying at the prestigious **RHS Hampton Court Palace Garden Festival** this July.



Combining striking modern design features with traditional materials and naturalistic 'drift' planting, this is a garden to be enjoyed by humans and wildlife alike. Tim demonstrates that it is possible to achieve a strong stylish aesthetic within a garden that also provides the natural, seasonal wild space to sustain a diverse kaleidoscope of life.

The garden Tim has created will display in the *Get Started Gardens* category of the well-loved RHS show at Hampton Court Palace.

These designs showcase simple inspiration that is achievable for the home gardener to strive for. Tim hopes to use the garden to change attitudes around how private, public and commercial spaces can be more sustainably developed for a planet-friendly future.

Drift Planting

The beds are dominated by grasses Tim has planted in 'drifts', a wonderfully natural alternative to traditional rows or clumps.

Odd numbers of each specimen are planted close together in gentle waves, repeating throughout the design to mimic the randomness of the natural world and providing year-round movement and texture.

Hazel Hurdles

Incorporated into the perimeter fencing, Tim has installed panels of beautifully textured hazel hurdles weaving and twisting natural branches together. These create crevices for insects to live and strip nesting material.

Bug hotels formed of natural materials and mounted elegantly on the panels offer additional insect habitat.

Sustainable Materials

Sustainability is also woven into elements less seen.

The pergola, fencing and sleepers are constructed from recycled timbers.

Hard landscaping is permeable allowing water to return naturally into the ground.

Hedging divides spaces within the garden while providing crucial nesting habitat for birdlife.

Tim's approach to garden design also reflects a growing trend for wellness gardens, offering wild spaces for people to reconnect with the natural world.

Fragrant plants and the inclusion of fire and water elements create a calming atmosphere while cozy seating encourages quiet reflection. Through his use of organic materials and naturalistic planting, Tim has created a garden that enhances your sense of happiness and mental wellbeing by encouraging an intimate relationship with the plants and wildlife around.



When the RHS show comes to an end, Tim's *Four Season Sanctuary* will continue to spread hope. Tim and his team will be relocating the garden to the grounds of MENCAP charity headquarters in Watford, a UK charity that supports people with learning difficulties and their families to live happy, healthy lives.

Tim has been involved with MENCAP for a number of years and the garden will form part of a wider project which aims to provide a range of therapeutic outdoor spaces for users of the charity's care facilities.

The urgent need to tackle climate change has made sustainability a more critical topic than ever before.

Sustainability underpins every aspect of Tim's design work, from material and build choices to plant selection and habitat creation. "I am committed to garden design that enhances biodiversity and minimises use of precious resources," Tim says.

"The RHS Hampton Court Palace Garden Festival provides a catalyst to push garden design beyond the usual daily limitations, take design concepts further and explore what can be possible," he continues. "I hope to show visitors what can be achieved in an outdoor space of any size or location with just a little extra thought. *A Four Season Sanctuary* demonstrates how sustainability can be prioritised in your gardening alongside refined modern design."



An award-winning garden and landscape designer, Tim Jennings has been professionally creating private and commercial gardens for over 18 years.

Working from his studio in the shadow of Cambridgeshire's inspiring Anglesey Abbey, Tim crafts stunning outdoor spaces to suit the smallest courtyard to the grandest country home.

Visit www.timjenningsdesign.co.uk or email tim@timjenningsdesign.co.uk to find out more.

KEY PLANTS IN A FOUR SEASON SANCTUARY

With a colour scheme from the most delicate white to the richest deep purple, the garden offers a mixture of boldness and fragility – just as we find in nature.



MOLINIA CAERULEA 'EDITH DUDSZUS'

This grass has deep purple flower heads and almost black stems that give an earthy and dramatic feel to the planting.



CENTAUREA SCABIOSA

Also known as greater knapweed. This wonderful flower is a magnet for pollinators such as, Butterflies and bumble bees



SUCCISA PRATENSIS

Otherwise known as the devils bit scabious, these beautiful tiny blue to purple flower heads dance in the breeze and attract many native butterfly, bee and insect species.



BUTOMUS UMBELLATUS 'ROSENROT'

This wonderful marginal plant creates a sense of scale for any waters edge. In the wildlife pond, its tall umbellifer like flower heads support pollinators. Dragonfly larvae climb its stems for support as they emerge from their larvae casings.



DESCHAMPSIA CESPITOSA BRONZESHLEIER

This grass gives a natural soft feel to the planting as it would in the wild.



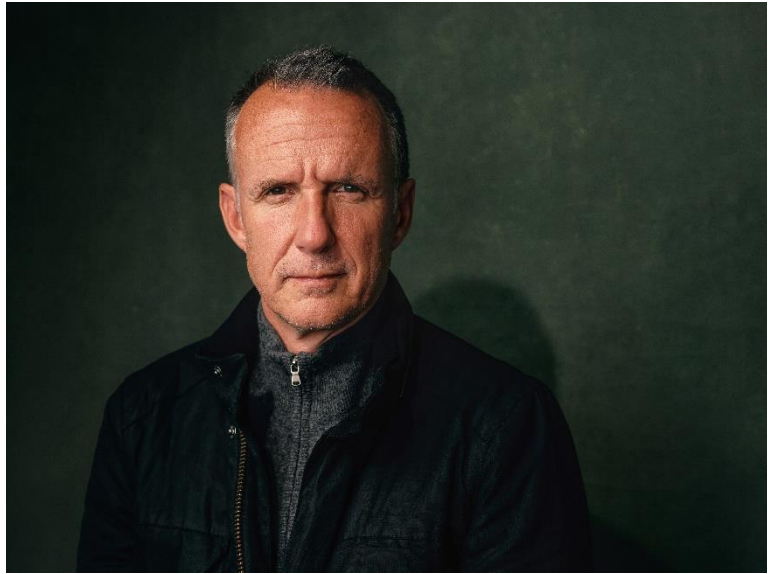
EREMURUS PINOKKIO

This grass gives a natural soft feel to the planting as it would in the wild.

Tim Jennings | Biography

Award-winning garden and landscape designer Tim Jennings has been professionally creating private and commercial gardens for 18 years.

Working from his studio in the shadow of Cambridgeshire's inspiring Anglesey Abbey, Tim crafts stunning outdoor spaces to suit the smallest courtyard to the grandest country home.



Tim began his professional life as a musician and composer, producing music for Sony, EMI and Universal as well as writing scores for TV and film. Since a young age, Tim had nurtured a love of gardening and he soon felt drawn to the outdoors once again, redirecting his creativity into garden design.

An established career

Tim undertook formal training at London's prestigious environmental college Capel Manor, where he obtained diplomas in garden design and horticulture. In 2001, he established Home Counties based studio *Everchanging Garden Design & Build*, where he grew a broad portfolio of projects including roof terraces, large estates, commercial commissions and contemporary spaces.

High profile projects include the Wonderworks nursery garden at Warner Bros. Studio where Tim formed a wild play paradise between the towering buildings of the studio using recycled materials and naturalistic planting.

At a green Michelin star restaurant in Hertfordshire, Tim designed an outdoor dining area to match the high-quality gastro experience with a simple palette of untreated timber and black ironmongery edged with lush herbaceous planting.

Tim has also exhibited at the London Garden Show in Alexandra Palace, where he was awarded Silver Medal by the team of judges and voted recipient of the People's Choice Award for best garden in show.

Inspired by nature

In 2022 Tim moved to Cambridgeshire, rebranding his studio *Tim Jennings Landscape & Garden Design* to reflect the very personalised creative process he provides. Tim's practice displays a strongly naturalistic approach to planting which he incorporates with bold modern design elements.

Through his striking designs, Tim is committed to changing attitudes about how private, public and commercial spaces can be more sustainably created for a planet-friendly future.



