

**PRESS RELEASE**

**June 2024**

**Bringing a taste of the Mediterranean to the RHS Hampton Court Flower Show.**

Drawing from the warmth and vibrancy of Greek landscapes, this garden introduces some of their iconic elements into British gardens. It showcases natural limestone as well as offering practical solutions to climate adaptation in our gardens such as permeable landscaping and drought tolerant planting.

Kantalis exhibitor 'People's Garden'

Live 'Get scheme.

Crafted for Mediterranean detail of the

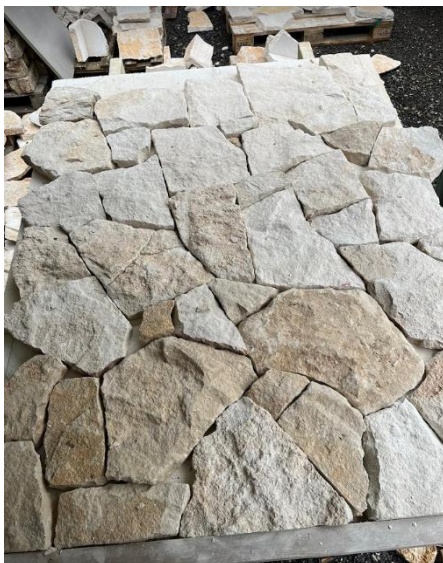
infuse this the charm of soft, warm tones and natural stone. The garden captures sensory experiences, from the scents and sights to the tastes of Mediterranean life.



Designed by Katerina - first time RHS and recent 'Gold' and Choice Best Show award winner at BBC Gardeners' World 2024 - as part of the Started Garden'

admirers of gardening, every garden is chosen to serene retreat with

The garden aims to guide the visitor through a journey, with a central limestone path that encourages further exploration. The design emphasises connections – each element within the garden relates to another, reflecting the interconnectedness that is inherent within Mediterranean culture.



The garden champions ecological sustainability, featuring a water-wise approach, mindful material choices and drought-tolerant planting.

**Key Features**

- **Limestone prominence:**  
Limestone is a key feature of Greek towns. The cladding we're using here is a new product generously provided by All Green. It will be the first time it has been seen in an RHS Show and UK gardens. In comparison to concrete, limestone reflects rather than absorbs heat. Meaning it will remain cool to touch. Perfect for keeping your plants cool and negating the use of too much water - especially useful in drought prone areas.
- **Sustainability focus:**  
Katerina Kantalis has created the garden with sustainability at the forefront of her design by incorporating minimal hardscaping with permeable paving allowing for efficient water drainage. The garden also reduces the use of excessive watering by eliminating lawns.



- **Drought tolerant plants:**  
Including plants adapted to surviving long dry periods and a changing UK climate.
- **Biodiversity support:**  
Promoting the use of trees, such as *Punica granatum* with low ground cover and shrubs to encourage biodiversity by creating layered habitats that support a variety of wildlife. Ground plants help prevent soil erosion and retains moisture.
- **Diverse planting mediums:**  
The garden uses various planting mediums, including terracotta pots for overwintering delicate plants, gravel and soil. All of these contribute to an environmentally sustainable garden.

### **Inspiration**

With roots in Greek/Australian drought prone regions and experience in the evolving UK climate, Katerina aims to demonstrate that beautiful gardens are possible with creative permeable hardscaping and drought tolerant planting. By imparting aspects of Greek and Australian gardening traditions, Katerina aims to show how these principles can enrich British gardens, creating spaces with ecological value, aesthetic impact and resilience.

### **About Katerina Kantalis**

Drawing inspiration from her Australian upbringing and Greek heritage, Katerina's deep passion for gardens, nature and food has led to a career in garden design.

After relocating to the UK, she worked successfully in fundraising and science, before retraining at the British Academy of Garden Design. Following her studies, she then established her own garden design studio in South East London.

Recently, Katerina was awarded both a 'Gold' and the much coveted 'People's Choice Best Show Garden' award at the 'BBC Gardener's World Live 2024' event. Her unique approach to garden design seamlessly merges geometric patterns with influences from both Mediterranean and Australasian landscapes. Her designs emphasize the use of permeable materials and focusing on creating rich textures.

"Designing a show garden allows me to channel my creativity and passions," Katerina says.

"It's a platform for me to share ideas and tips, proving that garden design can be both accessible and inspiring."

### **Find out more:**

RHS Hampton Court Flower show: [The Mediterraneo Garden at RHS Hampton Court Palace Garden Festival 2024 / RHS Gardening](#)

Katerina Kantalis website: [RHS HAMPTON COURT 2024 | Katerina Kantalis Garden Design](#)

### **Contact details:**

**Katerina Kantalis**

**07818 304017**

[info@katerinakantalis.co.uk](mailto:info@katerinakantalis.co.uk)

[www.katerinakantalis.co.uk](http://www.katerinakantalis.co.uk)