

**National Education
Nature Park grants
2024-25**

Introduction

Laura Wirtz

- Grant Manager
- Royal Horticultural Society

Young people are leading the way in creating a network of green spaces in schools, colleges and nurseries across the country

Free programme for all education settings in England

Young people exploring and transforming their learning sites for people and wildlife

Boosting biodiversity locally and nationally, while developing connection to nature and vital skills for their futures

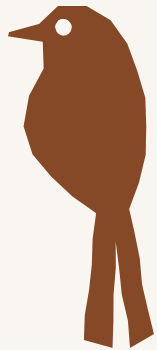
Using digital tools to map out and survey their outdoor spaces

Collecting real scientific data to aid nature recovery, with the difference everyone is making displayed on an online map

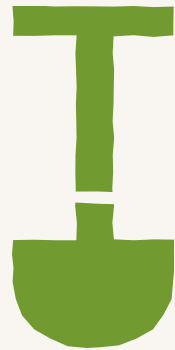


Programme goals

Biodiversity gain
across the
educational
estate



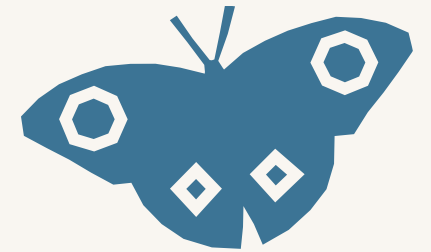
Development of
green skills



Young people
exhibit pro-
environmental
behaviours



Improved
wellbeing for
young people



About the grant programme

- Funded by the Department for Education (DfE)
- DfE have selected 1205 nurseries, schools and colleges across England to receive the grant
- A full breakdown of eligibility can be found on the DfE website



About the grant

- Up to £10,000 – paid in advance
- The application form closes on 27 March 2025
- Please apply early to ensure you spend the grant before the expenditure deadline – 5 June 2025



Before you apply



Home ▶ How it works ▶ Resources ▶ News and events ▶

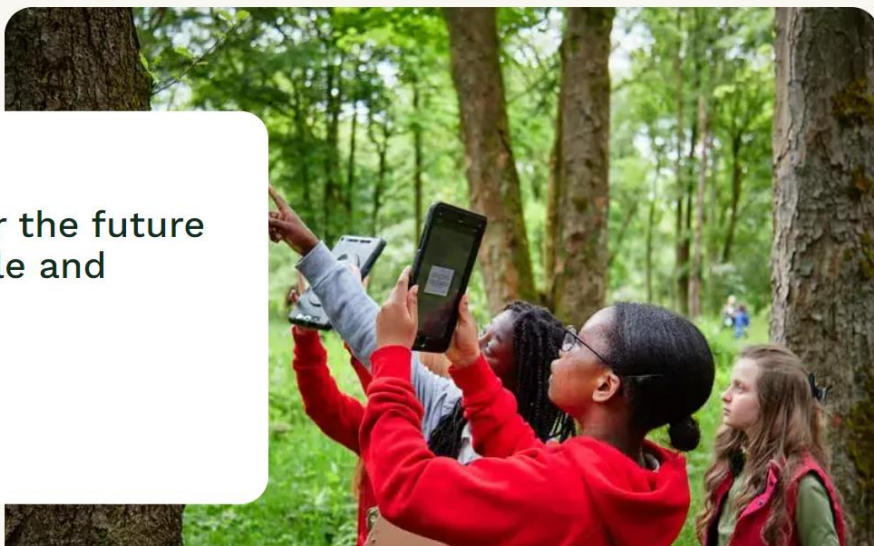
Login

Register

Search for a topic or resource

Take action for the future of young people and nature

Register now



Search...



Become a member ▶

Get involved Gardening Shows Gardens Learn Science Shop

About My RHS

Get involved Schools Every child in England can boost biodiversity National Education Nature Park Workshops at RHS Gardens

National Education Nature Park grant

Frequently asked questions

Our frequently asked questions (FAQs) cover all you need to know about the National Education Nature Park grant. To help you manage your project, we suggest you download the **checklist for applicants and grantees for the 2024/25 Nature Park grant**

The information below is only for schools who did *not* receive a Nature Park grant in 2023/24 and are on the **eligibility list**. If you did receive a grant in 2023/24, please visit the **top-up grant page**

Looking for something specific?

[About the grant programme](#) | [About the grant](#) | [Eligibility](#) | [About the application process](#) | [Using the grant portal](#) | [Preparing your application](#) | [Reporting](#)

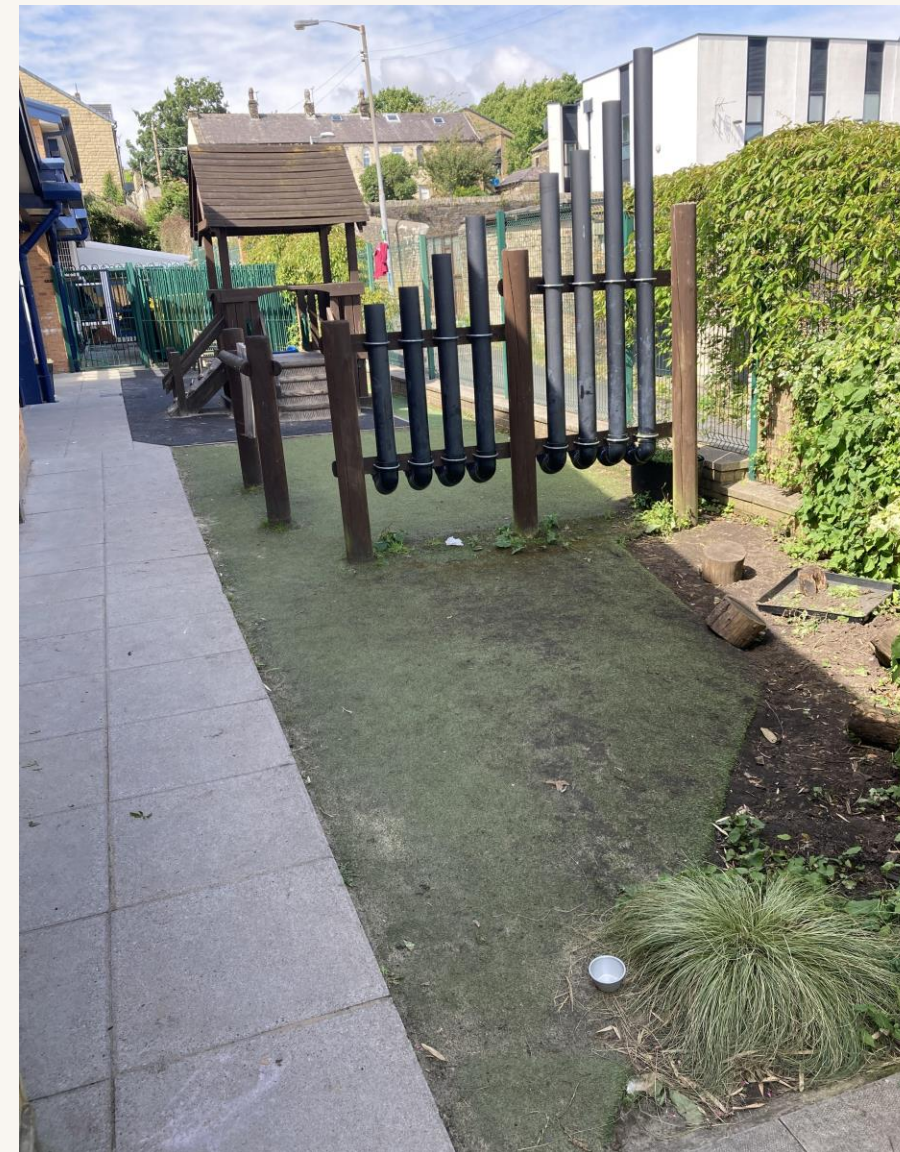
Grey to green

- This is where the greatest nature gains are
- Every nursery, school and college has some grey space
- You can take time to study nature on our site before changing any green spaces, enabling you to *measure* your nature gains

By changing parts of our ‘grey’ landscape of human-made areas into natural habitat, however tiny, we are creating homes and resources for wildlife to move into and thrive.

Natural habitats boost wellbeing, calmness and coolness on a site, and can improve water drainage and climate resilience.

Grey space



Not eligible – spaces that already are green



Eligible expenditure

- Capital spend only
- Expenditure should add biodiversity and enable engagement with the National Education Nature Park programme
- **Grey to green** habitat enhancements, including making improvements to year 1 grant project
- Creating or adding biodiversity to **grasslands**
- Creating or improving ponds



Spending limits



- **Up to £10,000** on biodiversity interventions
 - Plants
 - Ponds
 - Planting material
 - Water holders and irrigation

- **Up to £2,000** on fieldwork equipment
- **Up to £2,000** in total on sheds or other equipment storage, wet weather gear, tools, gloves or other gardening gear
- **Up to 50 percent** of your grant amount on specialist support such as contractors or biodiversity experts.

Example eligible budget:

- **£2,500 on biodiversity items**
- **£460 on a toolshed**
- **£1,630 on tablets and camera traps**
- **£3000 on concrete removal**

Total: £6,090

Not eligible

- Enhancement of green space unless it is a pond or grassland
- Building outdoor classrooms, play areas or structures that aren't part of a project to increase biodiversity
- Training or CPD
- Overtime payments for school staff
- Visits to local nature sites
- Seating unless it can be a habitat (eg it has an integrated planter) or is needed for accessibility
- Anything outside of the school site



The application process



Log in

Register

Welcome to the RHS Grant Portal

If this is your first time here, select the Register button below.

Register to apply

To apply for the National Education Nature Park grant, you must register your details here.

If you have already registered, please log in below. Please note you will have to register separately for this grant portal - your Nature Park login will not work.

REGISTER

LOGIN



National Education Nature Park grant

RHS is administering the Nature Park grant as a member of the National Education Nature Park partnership.

Full details of the grants programme can be found [here](#).

Before you contact us, please check the [FAQ linked at the above page](#).

Only schools that have been invited to apply for the grant will be able to access the application form. If your school is on [the list of eligible schools](#) but you have not received an



RHS Communities Grants

To hear about any future funding for community gardening groups from the RHS Communities team please sign up to [the newsletter](#) where we will announce any available funding.

Login

Flexigrant



Application Portal

My account

My contact details

Available grants

My applications

My downloads

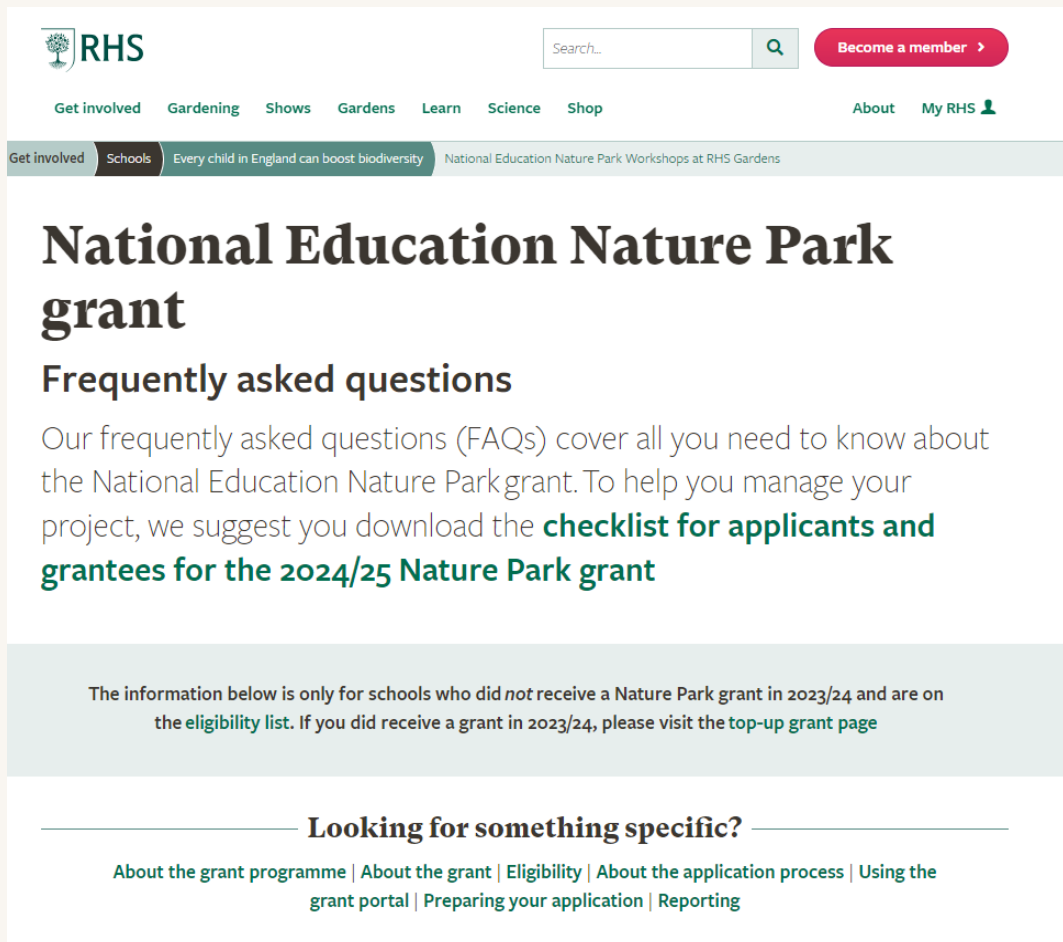
Nature Park grant 2024-25

**This grant is closed or you have already started or completed an application for this grant.
Select the Application Portal button above.**



National Education
Nature Park and
Climate Action Awards

Resources



The screenshot shows the RHS website header with the logo, a search bar, and navigation links. Below the header, there is a sub-header for 'Schools' with the text 'Every child in England can boost biodiversity' and 'National Education Nature Park Workshops at RHS Gardens'. The main heading is 'National Education Nature Park grant' followed by 'Frequently asked questions'. The text explains that FAQs cover all needed information and suggests downloading a 'checklist for applicants and grantees for the 2024/25 Nature Park grant'. A grey box contains a note about eligibility for schools that did not receive a grant in 2023/24. At the bottom, there is a section titled 'Looking for something specific?' with links to various grant-related pages.

RHS

Search... [Become a member >](#)

[Get involved](#) [Gardening](#) [Shows](#) [Gardens](#) [Learn](#) [Science](#) [Shop](#) [About](#) [My RHS](#)

Get involved **Schools** Every child in England can boost biodiversity National Education Nature Park Workshops at RHS Gardens

National Education Nature Park grant

Frequently asked questions

Our frequently asked questions (FAQs) cover all you need to know about the National Education Nature Park grant. To help you manage your project, we suggest you download the [checklist for applicants and grantees for the 2024/25 Nature Park grant](#)

The information below is only for schools who did *not* receive a Nature Park grant in 2023/24 and are on the [eligibility list](#). If you did receive a grant in 2023/24, please visit the [top-up grant page](#)

Looking for something specific?

[About the grant programme](#) | [About the grant](#) | [Eligibility](#) | [About the application process](#) | [Using the grant portal](#) | [Preparing your application](#) | [Reporting](#)



Checklist for applicants and grantees for the 2024/25 Nature Park grant

This checklist is an **optional** tool that might help you manage your funded project.

You do not need to send this in to us – it is only for your use.

If you have questions, check your [FAQ](#) first, and send additional questions to natureparkgrants@rhs.org.uk

If you have a printed version of this checklist, you can find an online version with all the website links [here](#):



Key dates for the grants programme:

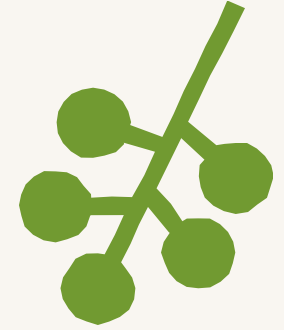
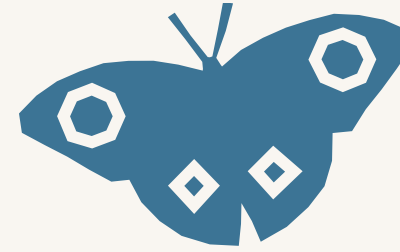
Deadlines

- Applications open on 12 September 2024
- Applications close on 27 March 2025
- Expenditure deadline 5 June 2025
- Reporting deadline 3 July 2025



Before you apply

- Agree who should apply for your school
- Register for the National Education Nature Park
- Ensure learners are involved in the deciding how to use the grant using the Getting Started and Start Planning for Nature packages on the National Education Nature Park website
- Ensure you have created your site boundary
- Ensure you have mapped the habitats on your site, or have planned to with your learners to understand the opportunities on your site
- Choose your enhancements
- Put together your budget
- Let us know who your schools' lead contact is – natureparkgrants@rhs.org.uk





National Education Nature Park and Climate Action Awards

Led by



With



Commissioned by



Partners



Working with

