



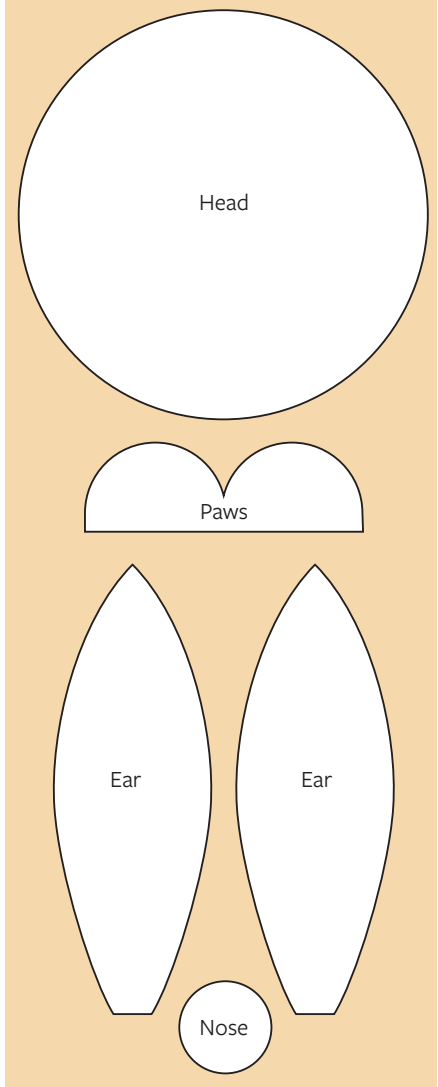
# How to make a bunny pencil holder

## You will need:

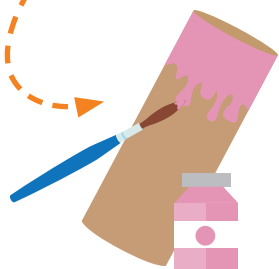
- A cardboard toilet roll tube
- 2 different coloured sheets of card or heavyweight paper
- Some small twigs or straw for the whiskers
- Paint and paint brush
- Double-sided tape
- Scissors
- Black felt pen or pencil
- Cotton wool



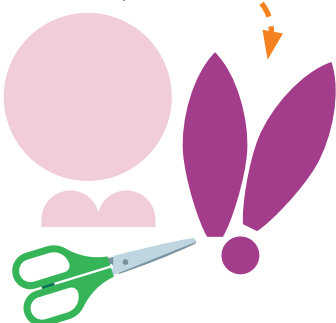
Use this for a template for the head, ears, paws and nose.



**1** Paint the cardboard toilet roll tube the same colour as the sheet of card you've chosen for the bunny's head.



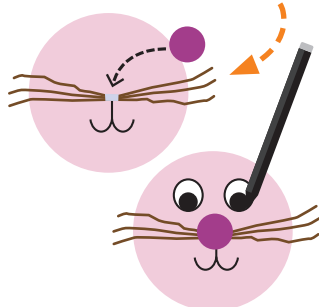
**2** Using the coloured card, cut out the ears, head, paws and nose (use the template opposite for sizes). Make sure the ears and nose are a different colour card to the head and paws.



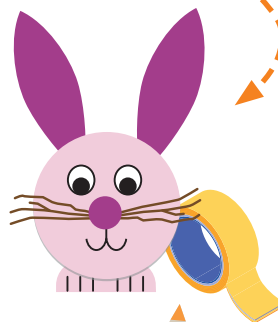
**3** Using a black pen or pencil draw a mouth on the head shape and add six lines on the flat edge of the paw shape.



**4** Cut the twigs or straw to a length of about 10cm and bind them together in the middle with double-sided tape and stick it in position on the head. Using double-sided tape stick the nose on to the middle of the head. Draw some googly eyes.



**5** Stick the ears and paws to the back of the head using double-sided tape.



**6** Now using double-sided tape, stick the completed bunny head to the bottom of the painted toilet roll tube. Finally add a small ball of cotton wool to the top of the tube for the bunny's tail. Add your pencils and you're done.