



# Winter Sculpture Exhibition Artist Catalogue

11 November 2023 -  
31 January 2024  
[rhs.org.uk/rosemoor](https://rhs.org.uk/rosemoor)

RHS Registered Charity No: 222879/SC038262



## Welcome to RHS Garden Rosemoor's Winter Sculpture Exhibition 2023/24

Now a regular feature, the Winter Sculpture Exhibition has continued to grow and attracts over fifty thousand visitors annually.

Rosemoor curates the exhibition and employs a variety of methods to source its participating sculptors: some are found whilst visiting other gardens and exhibitions locally, others are recommended by the current artists but often desk research too can yield wonderful results. However some of the most remarkable sculptors and their works have simply been drawn to the exhibition on their own.

The gardens in winter are the perfect backdrop for the sculptures. As the foliage turns and falls, the garden appears quite different with structural elements being more evident. Sculptures are placed in and around the garden in such a way that the piece's complement and enhance their setting. Essential elements of the pieces, their tone, message or even material construction are extracted and echoed in the immediate environment in which they are placed.

We like to site the sculptures in such a way that the observer is confronted and even sometimes challenged by these material statements. The quality of winter light in the garden is also an important consideration when looking for the ideal location. The low winter sun or the effects of adverse weather and early darkness can be used to advantage in dramatically highlighting the sculptures.

This year a number of the pieces feature within Glow illuminations which can show the art in a totally different light.

Most of our sculptures are available to purchase or can be made to commission. These individual creations can be yours to own and used to enhance your own home or garden in dramatic and exciting ways.



**Every sale helps to support our work as a charity.**



# Angela Farquharson

[farquharsonduffysculpture.com](http://farquharsonduffysculpture.com)

Angela has exhibited her sculpture throughout the UK at sculpture shows and galleries. She has also shown her sculpture at the RHS Chelsea Flower Show and Hampton Court Flower Show. Her work is available in a range of materials including bronze, ceramic and resin.

<b>Mardi Gras</b>	<b>£2200</b>
<b>Serena</b>	<b>£2200</b>
<b>Ethereal</b>	<b>£8950</b>
<b>Sentinal</b>	<b>£3000</b>
<b>Juno</b>	<b>£4500</b>



---

# Angelique Medland

[potterybox.co.uk](http://potterybox.co.uk)

Angelique started her love of ceramics at an early age, going to study at Falmouth and Plymouth College of Art as a multi-disciplinary artist in ceramics, illustration, glassblowing and large scale metals. She has been a ceramicist and sculptor for over twenty years. Developing her collections around bringing out the hidden character of her animals and birds, in the hope that it will bring realisation to the viewer of the equality between us and other living creatures. Her studio is based in the Cornish countryside near Bude, where she loves to teach her passion for ceramics.

<b>Raux Fox</b>	<b>£55</b>
<b>Scraper</b>	<b>£695</b>
<b>Just Chillin</b>	<b>£495</b>
<b>Vulnerable (Gorilla)</b>	<b>£695</b>
<b>What are you looking at?</b>	<b>£495</b>

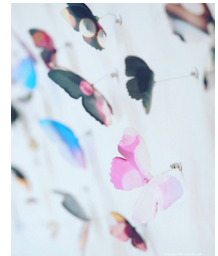


# Anne Bennett

[contactannebennett.wixsite.com/website](http://contactannebennett.wixsite.com/website)

Anne Bennett is an award-winning Artist based in South Devon. Her work has been exhibited at the Royal Academy Summer Exhibition alongside renowned artists such as David Remfry and Tracey Emin. In 2022, her installations toured seven cities in the UK and abroad. Anne's art aims to reconnect people with nature's beauty and highlight the captivating forms found in flora and wildlife. She is passionate about bringing contemporary art outside of traditional gallery spaces, sparking conversations about climate change and rediscovering community heritage. Anne's thought-provoking creations make the invisible visible, inspiring dialogue and fostering a deeper connection with our environment.

<b>Butterfly Season</b>	<b>£30000</b>
<b>Emergence</b>	<b>£27495</b>
<b>Hope</b>	<b>£21340</b>
<b>Compassion</b>	<b>£14498</b>
<b>Transformation</b>	<b>£18995</b>



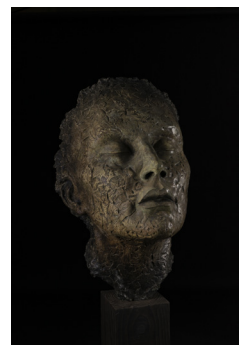
---

# Brendon Murless

[brendonmurless.com](http://brendonmurless.com)

Brendon creates sculptures for both indoor and outdoor settings, which range from small mantel piece sized to large scale garden sculptures. He takes inspiration from the human form, looking at the complexities of what makes us human physically and emotionally. Brendon portrays this by exploring the body in different forms, poses and materials. For each piece of new work he will start with an idea, but is open to continual exploration of materials to marry them with the desired form. The material informs the shape and finish that the final piece takes.

<b>Mother</b>	<b>£5900</b>	
<b>Rose (Wall Mask)</b>	<b>£5450</b>	
<b>Listen to the Forsest II</b>	<b>£3500</b>	



# Ben Cox

[coxben4@gmail.com](mailto:coxben4@gmail.com)

Ben Cox, grew up on a farm here in Devon where he has his studio and is surrounded by the animals that he is endeavouring to replicate.

This stunning piece, "Arabian Horse" is the latest in a series of unique animal sculptures each taking hundreds of hours of studying his subject and careful assembly. It is formed from many hundreds of individually sourced items, ranging from six keys hidden throughout the piece to rare components of vintage agricultural machinery and tools.



**Arabian Horse**    £12500

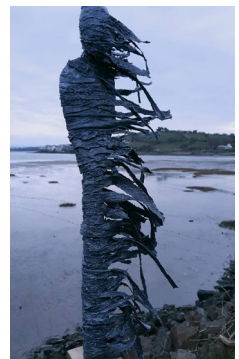
---

# Carrieann Moore

[iamcarrieann29@gmail.com](mailto:iamcarrieann29@gmail.com)

Carrieann came across textile hardening figurative sculpture quite by accident. Each piece she creates is handmade, meaning no two pieces will ever be identical. The fabric hardener she uses is environmentally friendly and non-toxic. The materials are sourced using cheap throw away fashion or scouring charity shops, which helps reduce the impact on landfill in a small way. Carrieann's work is very unique and pieces can be made to withstand outside conditions or as ornamental pieces for the indoors.

<b>Daisy</b>	<b>£475</b>
<b>Up</b>	<b>£475</b>
<b>Southerly</b>	<b>£450</b>
<b>Autumn</b>	<b>£300</b>
<b>Oddbob</b>	<b>£300</b>



# Dawn Brimicombe

[dawnbrimicombe.com](http://dawnbrimicombe.com)

Dawn is a successful maker/designer initially working with encaustic wax and resin for over 20 years, now currently working with porcelain creating hand built porcelain ceramics for the home and garden. Inspired by nature, the sea and organic formations, Dawn creates unique one off pieces mainly influenced by her surroundings on the Devon and Dorset borders as well as her travels to Australia and Iceland. Dawn has taught artist/makers and photographers in the UK and abroad including Australia, Sweden & Norway. Dawn has recently worked on commissions for London based interior designers and private clients.



<b>Large Seed Head</b>	<b>£45</b>
<b>Small Seed Head</b>	<b>£25</b>
<b>Large Snowdrop</b>	<b>£75</b>
<b>Small Snowdrop</b>	<b>£35</b>

---

## Ed Hill

[edhill.co.uk](http://edhill.co.uk)

Ed gets his inspiration in the heart of the beautiful South Hams where each piece is creatively handmade. The ideas are developed by studying photos, cardboard modelling, clay sculpting and metal prototyping. They have striking realism that will make a statement in any home or garden. On closer inspection you will see they are made from recycled cutlery and metal. Look for the special or hidden details of this in each piece. The repurposed metal shines with a spirit of renewal and honours that which it reflects. The sculptures catch and play with the light throughout the day and bring much needed life to a dark or uninteresting part of the garden.

<b>Poised Wren on a C</b>	<b>£200</b>
<b>Poised Wren on a Crook</b>	<b>£200</b>
<b>Patience Kingfisher on a C</b>	<b>£200</b>
<b>Promise - Swallow in Fight</b>	<b>£350</b>
<b>Iridescent Dragonfly</b>	<b>£175 (no base)</b>
<b>Iridescent Dragonfly</b>	<b>£200 (with base)</b>
<b>Patience Kingfisher on a Crook</b>	<b>£200</b>



# Dolton Designs

[doltondesigns.co.uk](http://doltondesigns.co.uk)

Chantelle and Andrew work together at Dolton Designs in North Devon to design and create metalwork for garden lovers and outdoor spaces. Working mostly in mild steel, they hand craft their collection of garden sculptures as well as a range of useful garden supports, plant frames and trellis. They also work with their clients to create bespoke sculptures, structures, arches, benches and gates, to naturally compliment the garden. Their 2023 bespoke projects include the new 'Fern Frond Bridge' at RHS Rosemoor.

<b>Fire Goblet</b>	<b>£585</b>
<b>Giant Snowdrop</b>	<b>£359</b>
<b>Rusty Pears</b>	<b>Set of three £705</b>
<b>Rusty Pear</b>	<b>Lg £414; Med £242; Sm £118</b>
<b>Rusty Apples</b>	<b>Set of three £640</b>
<b>Rusty Apple</b>	<b>Lg £382; Med £218; Sm £106</b>
<b>Rusty Acorns</b>	<b>Set of three £475</b>
<b>Rusty Acorn</b>	<b>Lg £289; Med £148; Sm £70</b>



---

## George Hider

[lawrencehider2002@yahoo.co.uk](mailto:lawrencehider2002@yahoo.co.uk)

George Hider is a self-educated artist working for the last 24 years from his Somerset workshop. A pioneer for the use of scrap metal in art, his ability to create life like sculptures has evolved from dedication and a natural talent. He is fastidious in the preparation of the metal by cleaning, bending and forming each piece before creating an individual sculpture. He is equally painstaking in the final finish to remove all rough edges to create a tactile form. His motivation is his passion to create warm, realistic forms from cold metal and for people to enjoy his work.

<b>Kiwi</b>	<b>£430</b>
<b>Heron</b>	<b>£650</b>
<b>Dog 1,2 &amp; 3</b>	<b>£1500</b>
<b>Owl</b>	<b>£250</b>
<b>Cockerel</b>	<b>£290</b>
<b>Chicken</b>	<b>£280</b>
<b>Antelope</b>	<b>£2100</b>



# Lorraine Smith

[larrysstudio@icloud.com](mailto:larrysstudio@icloud.com)

Lorraine graduated from Winchester School of Art in 1998 and works from her Devonshire Studio in a variety of mediums including sculpted concrete and glass. Her inspiration is drawn from the Human Form, Religious Architecture, Mother Nature and Underwater Environments. Sculptural Forms evolve from a combination of observation, research, and year's worth of sketchbooks including drawings and writing created whilst underwater. Lorraines interests include Nature, Alternative Lifestyles and being connected to the Sea.

<b>Tend</b>	<b>£820</b>
<b>Full Tenacity</b>	<b>£395</b>
<b>Earth Pulse</b>	<b>£2250</b>
<b>Structive</b>	<b>£550</b>
<b>Forgotten Civilisation</b>	<b>£3200</b>



---

# Lynette Forrester

[glassdesignsuk.com](http://glassdesignsuk.com)

Lynette is a Glass Artist who works from her studio in Cheshire. After leaving Art College she started her career as a Graphic Artist. Around 20 years ago, Lynette began working with glass, this was to be career changing. The interplay of colour and light and the patterns found in nature often inspire and inform her glass pieces. Experimentation is key to the development of her new work. Lynette is keen to explore other possibilities that this magical medium can offer. Exhibiting widely across the country, Lynette has her art glass in collections at home and abroad.

<b>Raindrops</b>	<b>£80</b>
<b>Autumn Colour</b>	<b>£1400</b>
<b>Evolving Landscape</b>	<b>£1200</b>
<b>Blue Glass Leaves</b>	<b>£1200</b>
<b>Large Glass Leaves</b>	<b>£875</b>





# Lucianne Lassalle

[luciannelassalle.com](http://luciannelassalle.com)

Born in Paris in 1960, now living in Bristol, the human form has always been Lucianne Lassalle's passion. Hugely influenced by contemporary dance and physical theatre and fascinated by the archetypes of ancient mythologies she is gracefully bridging the gap between Hip Hop and Michelangelo. "I am fascinated by the complexity of the human experience and from this I am compelled and inspired to make sculpture"

Lucianne works from the life model, as well as from photos and memory, she works initially in clay the sculpture is then cast into limited edition bronzes or resins.

<b>Rambeaux</b>	<b>£7500</b>
<b>Icarus freestyles</b>	<b>£11850</b>
<b>The Lady of Provence</b>	<b>£3500</b>
<b>The Three Miss Graces</b>	<b>£7900</b>
<b>Proton VI - Particle to Waves</b>	<b>£7385</b>



---

# Marian Ironmonger

[marian.ironmonger@btinternet.com](mailto:marian.ironmonger@btinternet.com)

Using clay as a medium of expression or communication was love at first touch for Marian. She explains: "Clay is pliable, forgiving and unpredictable. Unpredictable because sometimes it can direct your work onto a different path. Clay is also a teacher – one learns to be pliable, forgiving and open to possibilities."

Marian's work, cast in bronze resin, is mostly figurative and inspired by the rich culture of the Philippines, the land of her birth.

<b>Alamat (Legend)</b>	<b>£5000</b>
<b>Duyan (Cradle)</b>	<b>£3000</b>
<b>Ligaya (Joy)</b>	<b>£4000</b>
<b>Kabiyak ng Puso (One Heart)</b>	<b>£1650</b>

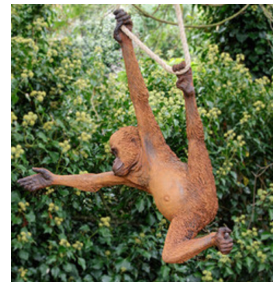


# Martin Adamson

[martinadamson.co.uk](http://martinadamson.co.uk)

'After a thrilling surf on the Severn Bore, I scramble up the muddy bank ready for the long walk back. It's dusk as I make my way through an orchard by the river. I spot a beautiful barn owl swooping from an old apple tree and I am inspired.' Working from his Studio in the Cotswolds, Martin's sculptures capture a moment in time, a fleeting glimpse of a beautiful animal in its natural environment. This combines with his love of surfing the tidal wave known as 'the Severn Bore' where he finds his beautiful driftwood or 'Borewood'

<b>Ginger</b>	<b>£1650</b>	
<b>Wrath</b>	<b>£850</b>	
<b>Hide &amp; Seek - Owl &amp; Mouse</b>		<b>£1350</b>
<b>Hide &amp; Seek - Mouse &amp; Nut</b>		<b>£350</b>



---

# Michael Lawrence

[michaellawrenceart@gmail.com](mailto:michaellawrenceart@gmail.com)

Michael studied Fine Art Sculpture at the University of Wales and is now based in Gloucestershire where he works from his studio in the Forest of Dean. Over recent years, Michael has created large wooden pieces for private and public space using both traditional and contemporary techniques. Michael's sculptures have a human element that goes beyond the material object. His work often portrays the human form in a playful way, exploring scale and ordinary moments. The sculptures capture a movement or feeling, suggesting a life within.

<b>Sitting</b>	<b>£3816</b>	
<b>Strolling</b>	<b>£3180</b>	
<b>Three Figures Dancing</b>		<b>£9010</b>



# Martin Duffy

[farquharsonduffysculpture.com](http://farquharsonduffysculpture.com)

Martin has been a professional sculptor since 1996. He has developed a following for his realistic sculptures of mostly British wildlife that capture the spirit of the subject. His work is in many private collections throughout the world and he has exhibited at venues such as RHS Chelsea Flower Show and Hampton Court Flower Show. He enjoys capturing the sense of movement within his sculptures.

<b>Large Leaping Hares</b>	<b>£12000</b>
<b>Large Boxing Hares</b>	<b>£10100</b>
<b>Leaping Hares</b>	<b>£2700</b>
<b>Harvest Mice</b>	<b>£650</b>
<b>Little Owl on Ball</b>	<b>£450</b>



---

# Neil Lossock

[dragonswoodforge.co.uk](http://dragonswoodforge.co.uk)

Neil trained as a blacksmith in Hereford and he later taught for ten years at both undergraduate and postgraduate level whilst concurrently launching Dragonswood Forge in 1994. Neil says "I am fortunate to love the job I do and enjoy the variation that the blacksmithing offers. I have been the lucky recipient of different awards over the years, from RHS shows to the spirited arena of International Blacksmithing competitions". In February 2016 he was awarded the bronze medal from the Worshipful Company of Blacksmiths, becoming a Fellow of the Company (FWCB) and a master blacksmith. Neil now judges others work and assess other blacksmiths for Worshipful Company awards.

<b>Tulip</b>	<b>£200</b>
<b>Giant Allium</b>	<b>£2750</b>
<b>Chrysanthemum</b>	<b>£350</b>
<b>Single fern Frond</b>	<b>£25</b>
<b>Single Poppy Head</b>	<b>£25</b>
<b>Snowdrops</b>	<b>£185</b>



# Oliver Bramstone

[ironintheblood.co.uk](http://ironintheblood.co.uk)

Oliver has gained a BA (Hons) Designer Maker and his Blacksmithing Diploma of Merit (AWCB). Oliver has a deep passion for his craft, and is heavily inspired by nature. He uses traditional hot forged blacksmithing techniques, alongside modern technology to create contemporary ironwork. He is an award winning 5th generation artisan blacksmith and works from his Devon based forge. His family business was established in 1899 and has been passed down through the generations.

<b>Love in a Mist</b>	<b>£7600</b>
<b>Allium Trio</b>	<b>£6800</b>
<b>Fern Leaf</b>	<b>£975</b>
<b>Teasel</b>	<b>£825</b>



---

# Roy Evans

[metalikart.co.uk](http://metalikart.co.uk)

Roy is a Wiltshire based metal sculptor specialising in copper to create unique two and three dimensional pieces inspired by nature. Roy's sculptures are created using traditional methods and techniques that bring the stunning colours and textures of these metals to life. Each piece begins with a preliminary drawing or Maquette before the metal is crafted into its final form and is a talking point wherever placed in your home or garden, indoors or outside. Roy has been a Coppersmith for many years, but his love of copper as a creative material took off when he discovered the art of flame-painting, and realised this ecologically sustainable material has got so much more to give.

<b>Maple Leaf Sphere</b>	<b>£1925</b>
<b>Blue Bicycle Cog Sphere</b>	<b>£1925</b>
<b>Pink Bicycle Cog Sphere</b>	<b>£1250</b>
<b>Sycamore Seed Pod</b>	<b>£555</b>
<b>Dragonfly</b>	<b>£850</b>



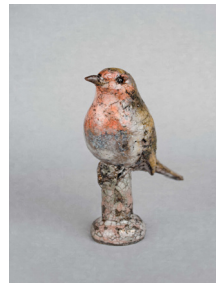


# Rachel Slade

[rachelsladesculptures.com](http://rachelsladesculptures.com)

Rachel's ceramic bird collection is inspired by her deep love and connection to the diversity of bird-life around her home in Devon. Each piece is individually brought to life using clays of differing texture and inherent colour. The surface of the birds' characteristic form is then enhanced with oxides and stains. Finally, these recognisable colours are enriched by raku firing. Rachel has a design background from architectural studies in the USA and an education degree in art and design.

<b>Kingfisher 2</b>	<b>£95</b>
<b>Wren</b>	<b>£85</b>
<b>Wren 2</b>	<b>£85</b>
<b>Bluetit</b>	<b>£85</b>
<b>Robin</b>	<b>£85</b>
<b>Treecreeper</b>	<b>£85</b>
<b>Nuthatch</b>	<b>£85</b>
<b>Female Mallard</b>	<b>£315</b>
<b>Pekin Bantham Cockerel</b>	<b>£315</b>



---

# Simon Conolly

[simonconollysculptor.co.uk](http://simonconollysculptor.co.uk)

Simon Conolly, RBSA, ARSMA Simon works from his studio overlooking Wenlock Edge in Shropshire. His sculpture is inspired by life in a rural setting. In particular, ordinary people going about their everyday lives, at work and at play. He is an elected member of the Royal Birmingham Society of Artists (RBSA) and an Associate of the Royal Society of Marine Artists (RSMA). His work has been regularly displayed at the RBSA, RSMA and at exhibitions of the Royal Society of British Artists. Also at the Summer Exhibition of the Royal Academy in 2012 and Royal Scottish Academy in 2023.



<b>Mans Best Friend</b>	<b>£4000</b>
<b>Sorting Out The Economy</b>	<b>£395</b>

# Stacey Beaumont

[staceybeaumont.com](http://staceybeaumont.com)

Stacey explores the transitional effect of light through glass, creating dynamic works that are responsive to their environments.

She favours reclaimed materials which bring their own character to pieces and help minimise the environmental impact of her work. However, glass is hand-chosen from specialist suppliers with a specific purpose in mind. Each work is unique and cannot be replicated. Stacey is strongly influenced by the stunning natural environment surrounding her workshop on the Cornish coast, her childhood in Africa and travels since.

<b>Lunaria</b>	<b>£1600</b>
<b>Mordonnow</b>	<b>£1700</b>
<b>Finistere</b>	<b>£1800</b>



---

# Tom Harral

[tomharral.com](http://tomharral.com)

Tom Harral has been a metalsmith for 20yrs and is based on Exmoor in Somerset. His previous focus was on furniture and lighting and now he specialises in garden ornaments and sculptures in mild steel that rust to become a part of the natural landscape. This year he has collaborated with Katie Comley to bring to life her intricate fabric designs of fungi, foliage and fern into sculptured lighted metalwork. These designs are inspired by the rich plant and insect life along the historic mineral line in the heart of Exmoor where they live.

<b>Fern Screen</b>	<b>£180</b>
<b>Deer Screen</b>	<b>£180</b>
<b>Fern Pillar Light</b>	<b>£370</b>
<b>Foliage Pillar Light</b>	<b>£450</b>
<b>Fungi Pillar Light</b>	<b>£560</b>



# Stuart Stockwell

[stuartstockwell.co.uk](http://stuartstockwell.co.uk)

Stuart Stockwell is a kinetic sculptor based in Cheltenham. He creates unique sculptures that capture attention and engage the imagination through simple design and movement. They interpret nature's genius; a balance of complex function and simplistic beauty, inspired by organic forms and sacred geometry. His pieces are multi-layered and deconstructed. They incorporate metals and concrete – materials taken from the earth – and refine them into elegant curves which give them feeling of movement in static rest. All of his pieces create a union between modern design and nature, blending fluidly with their surrounding environment and elements.

**Fern on Oak**      **£1600**  
**Sycamore G**      **£1700**



---

# Val Adamson

[thesculpturestudio.co.uk](http://thesculpturestudio.co.uk)

Val Adamson's most recent work is inspired by the dramatic sculptural hair forms of tribal African women which she combines with masks and art works from the same tribes. This has developed into a series of pieces that combine emotion with an abstract form reflecting that emotion. Working from her Studio in the Cotswolds, Val sculpts in clay and then moulds and casts her work into bronze and resin. She also teaches sculpting from life using traditional methods at Universities and from her Studio, sharing her love of sculpting with others and acknowledging the escapism and therapy that sculpture provides.

**African Triptych 1**    **£2800 for set of three**  
                                 **or £975 per head**

**African Triptych 2**    **£3500 for set of three**  
                                 **or £1200 per head**



# Wight & Wight

[wightandwight.co.uk](http://wightandwight.co.uk)

We are full time contemporary Somerset artisans, Nigel and Sarah Wight, working both individually and collaboratively designing and making hand crafted contemporary pieces. We produce a range of fused glass artworks and sculptures for both home and garden, which often include reclaimed wood and metal. Our work ranges from the figurative to the abstract and is predominantly inspired by the natural environment

<b>Wheel One</b>	<b>£450</b>
<b>Wheel Two</b>	<b>£390</b>
<b>Wheel Three</b>	<b>£470</b>
<b>Wheel Four</b>	<b>£325</b>
<b>Wheel Five</b>	<b>£1450</b>



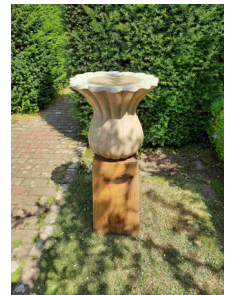
---

# Will Spankie

[willspankie.com](http://willspankie.com)

Will studied sculpture at Sir John Cass and Central St Martins Art schools in London. Since then he has been working as a self-employed stone carver and letter cutter. He makes stone sculpture and lettering for public art commissions, as well as working with garden designers and clients on a more domestic scale for gardens and interiors. He also teaches stone carving in schools, adult education colleges and prisons. He works predominantly in local Jurassic limestone's which can withstand an English winter. His work is concerned with natural forms, patterns, symmetry and the unfolding of numbers in space. He tries to capture the ambiguity and ephemeral nature of life in the permanence of carved stone; he also enjoys working collaboratively with people to help them realize their own projects and ideas.

<b>Micro</b>	<b>£3650</b>
<b>Torus</b>	<b>£5450</b>
<b>Poppy Seed Head</b>	<b>£1850</b>





## Garden Centre & Gift Shop

We stock a wide range of top-quality plants, tools and accessories with experts on hand to answer your questions. We also offer a 5-year guarantee on all hardy plants, so you can buy in confidence. Visit our Gift Shop to discover our wide range of horticultural books, artisan foods, kitchen accessories and unique gifts as well as our RHS Exclusive ranges available only in our shops.



## Eating & Drinking

Our indoor restaurant and Otter cafe are open for light lunches and afternoon tea or we have takeaway options from our Shepherd's Rest in the Stream Field. During the evening make the most of Glow with delicious festive treats.



## Staying at Rosemoor

Rosemoor House offers three luxurious holiday apartments, which are set within the former home of Lady Anne Palmer, allowing unique access to the garden outside normal opening hours. The apartments are available now to enjoy next year's Winter Sculpture Exhibition and Rosemoor Glow. For more information regarding availability visit us online [rhs.org.uk/gardens/rosemoor/holidays-and-short-breaks](https://rhs.org.uk/gardens/rosemoor/holidays-and-short-breaks)





## **Light up your festive season**

Make memories this festive season by exploring our gardens on a magical trail of light and colour with six atmospheric soundscapes to guide you through our garden

Timed entry and limited capacities all tickets need to be booked online at [rhs.org.uk/rosemoorglow](https://rhs.org.uk/rosemoorglow)

# Event Highlights of 2024

There's something for everyone year-round at RHS Garden Rosemoor. In addition to garden highlights that change every month, we host a multitude of events from the entertaining to the educational, from garden walks and talks to family fun days, plant and craft fairs.

**Festival of Snowdrops - February 1 - 11**

**Discover India Weekend - March 16 - 17**

**The Great Wool Weekend - April 13 - 14**

**Carnivorous Plant Weekend - May 24 - 25**

**Rose Weekend Craft & Food Market - 21- 23 June**

**Festival of Roses - June 14 - July 15**

**Vintage Weekend - July 27 - 28**

**Flower Show - August 16 - 18**

**Plant Heritage Autumn Plant Fair - September 7**

**Festival of Flavours - October 5 - 6**

**Winter Sculpture Exhibition - November 9 - January 31**

**Glow - November 14 - December 28**

**Christmas Carol Concert - 14 December**

For the full listing of events please visit our website  
[www.rhs.org.uk/gardens/rosemoor](http://www.rhs.org.uk/gardens/rosemoor)

**If you would like to be involved in any of our events or would like to become an event volunteer please email [rosemoorevents@rhs.org.uk](mailto:rosemoorevents@rhs.org.uk)**



