



RHS



2024 RHS CHELSEA FLOWER SHOW DISCOVERY ZONE EXHIBITORS

Please note: All information is provided by exhibitors and is subject to change.
For images and further information including full planting lists, please contact showspr@rhs.org.uk

1) **Hadlow College – Grow Your Mind**

Designer: Ian Fleming

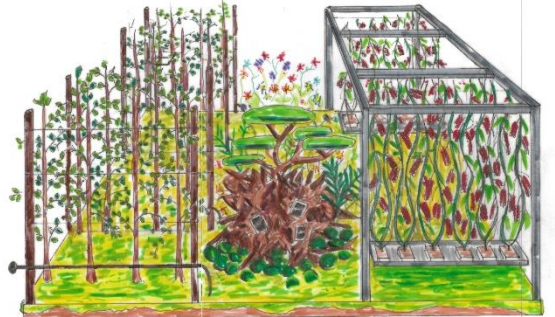
Media contact name: *Claire Shearwood-Burton and Steve Mandaluff*

Media contact details: claireshearwood-burton@northkent.ac.uk / 07525538491

This exhibit emphasises the range of ways in which horticulture affects the modern world. The exhibit is divided into three sections; representations of a modern orchard; a tomato glasshouse and a public garden. A floral carpet will also feature.

The design is centred around a large, upturned tree stump incorporating a bonsai tree, representing the work horticulturists do in landscape, design and amenity.

The design includes protected crops to showcase the science behind all-year-round hydroponic production of edibles, and incorporates climate monitoring, automatic fertigation, integrated pest management and pollination. The orchard representation incorporates a modern "fruit wall" production method, demonstrating cutting edge techniques in irrigation, frost protection, autonomous monitoring, and management. From the glasshouse, the designers aim to harvest up to a ton of tomatoes during the show week.



Relocation

All parts are being returned to the college and will be reused in new gardens.

2) **Sparsholt College: Plants, Routes and Branches**

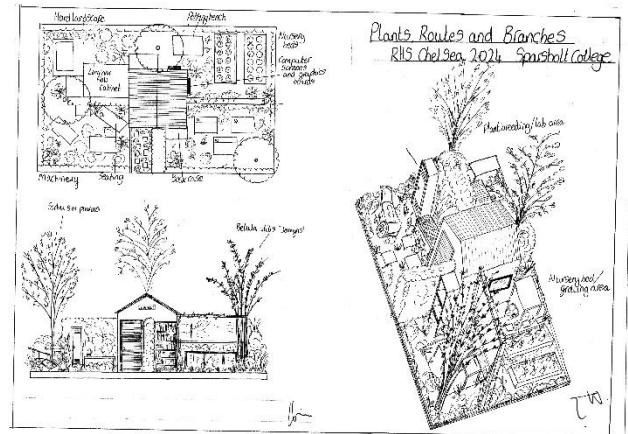
Designer: Chris Bird and Lucy Lewis

Sponsor: The Colegrave Seabrook Foundation

Media contact name: *Rosella Burrows*

Media contact details: press@sparsholt.ac.uk / 07872422375

This exhibition explores the history of plant introductions from Hampshire whilst celebrating the impact of influential horticulturists and the role Sparsholt College has played. The garden looks to the future generation of horticulturists, exploring the numerous and exciting career routes they may follow. This includes continual developments of new plants, showcased through the RHS Chelsea Plant of the Year. The garden signposts potential career routes and the opportunities provided by the horticultural industry for both new learners and those looking to branch out in their careers.



The design consists of four areas, all essential in supporting students of horticulture to become dedicated industry professionals. The plant breeding and laboratory area includes a *Choisya* timeline, and the nursery is home to informational boards and five RHS Chelsea Plant of the Year 2024 entries. The second half of the garden includes a classroom area, set up with desks and bookcases and a workshop complete with seating and lockers. All four areas surround a central 'demo shed' with a corrugated panel roof made of recycled plastic.

Relocation

The garden will be rebuilt at Sparsholt College after the show.

3) Phyta Biodesign

Designer: Zain Ansari

Media contact name: Zain Ansari

Media contact details: zain.ansari.20@ucl.ac.uk / 07873431882

This exhibition features a full-scale installation of the innovative Apia modular wall system, designed to create thriving habitats for solitary bee populations within urban environments. The exhibit's theme focuses on rewilding cities through an interspecies approach to architecture that integrates biodiverse habitats directly into building facades.

Key features highlighted are the mushroom mycelium panels with nesting holes tailored for solitary bees, along with informative displays explaining these important pollinators' vital role and the threats they face from habitat loss. The exhibit was inspired by research into declining bee populations due to urbanisation, as sustainable design solutions like Apia can transform conventional building surfaces into pollinator-friendly ecosystems.



Relocation

The exhibit will be relocated to UCL after the show. They will be running a long-term test and research at the Base KX campus to create an impact report for Apia.

4) Rootfull

Designer: Zena Holloway

Sponsor: Seachange Wine, Edward Bulmer, Fresh Air Sculpture

Media contact name: Zena Holloway

Media contact details: info@rootfull.com / 07710 037715

The exhibit features interactive displays that demonstrate the root textile, from how its grown, to how it becomes functional objects for fashion and interiors. The exhibit encourages visitors to touch and feel fresh wheatgrass root becoming textile. This pioneering venture shows that the power of plants is infinitely renewable, and that nature's capabilities are waiting to be utilised.



Relocation

This exhibit will feature again at the Boat Show International in June and Material Matters in September.

5) Asian Hornet – Stay Alert – Take Action – Protect Our Pollinators

Designer: Animal and Plant Health Agency

Sponsor: Defra

Contractor: Essential Productions Ltd

Media contact name: James Bertin

Media contact details: James.Bertin@defra.gov.uk / 07827883005

This exhibit, inspired by the increased findings of Asian hornets in the UK, vividly portrays the threat to UK pollinators, particularly honeybees. Visitors can learn to identify and report sightings through informative panels, interactive visuals, and representative models. Beginning the story with the hornet's European spread, the focus shifts to capturing prey and returning to the nest. This section emphasises other at-risk pollinators to this threat, bee's-eye view discovery areas and hornet tracking methods. Information on distinguishing lookalike insects and reporting sightings completes the journey.

The exhibit also showcases pollinator-friendly plants, real nest examples, and some of the hornet's other life stages. The exhibit urges vigilance to stay alert to the Asian hornet and take action to protect our pollinators, meeting the sponsors aim of good biosecurity, protecting the UK from harmful pests.

Relocation

The planters, boxes, models, beehive and oak construction materials will be re-used at other shows and events. All the plants and trees will be donated to the RHS rehoming scheme.

6) RHS Science: All About Hedges

Designer: Dave Green

Sponsor: RHS Science

Media contact name: Tijana Blanusa

Media contact details: Tijanablanusa@rhs.org.uk / 07929985731

Hedges are a popular feature of our urban and suburban landscapes, and they provide a number of environmental benefits. They trap airborne pollution, provide habitat for wildlife, capture rainfall and reduce localised flooding risks and contribute to summertime cooling. RHS scientists have just finished a two-year project funded by the Royal Commission for the Exhibition of 1851 to investigate the idea that mixing hedge plants improves environmental benefits.



This exhibit showcases a variety of hedge mixes as well as planting that offers further environmental benefits and is appropriate for planting near to hedges. Feature trees show how if left unpruned, hedges develop into mature trees and a central engagement area includes microscopes and other scientific equipment allowing visitors to see the benefits hedges provide at a detailed level.

Relocation

The elements of the garden will be reused in other projects.

7) Diversity is Queen

Designer: Bumblebee Conservation Trust

Sponsor: Ground Control

Contractor: Ground Control

Media contact name: *Andy Benson*

Media contact details: andy.benson@bumblebeeconservation.org / 07737588240

This exhibit aims to increase understanding of the value of diversity in nature, through bumblebees. Visitors can develop their knowledge of different bumblebee species, the various habitats they require to survive, and the importance of maintaining that diversity for healthy ecosystems and food security.

The exhibit represents four key bumblebee habitats. The first is gardens with a diversity of flowers throughout the year, which can provide vital habitats for many of our bumblebees. The second is Machair, a low-lying coastal grassland, found only on the western shores of northern Scotland and Ireland. Machair provides a vital last refuge for the rare great yellow bumblebee. Moorlands are the third habitat, usually found in upland areas and dominated by dwarf shrubs such as heather and bilberry, providing habitat for rare bilberry bumblebees. The last habitat is species rich grasslands, in the south of England and Wales, which support the last few fragile populations of the UK's rarest bumblebee, the shrill carder bumblebee.

The *Diversity is Queen* exhibit encourages gardeners to consider the diversity of nature and the importance of providing a range of food sources and habitats for our wild pollinators, so that they in turn can provide their vital ecosystem services.

Relocation



Elements of the exhibit will be shared among schools local to Ground Control head offices, in Essex.

8) *Bees for Development*

Designer: Bees for Development
Contractor: EH Thorne (Beehives) Ltd

Media contact name: Jenny Handley

Media contact details: Jennyhandley@beesfordevelopment.org / 07399000752

This exhibit shows simple ways to keep bees, with a backdrop explaining the UN Sustainable Development Goals. The exhibit will demonstrate how bees and beekeeping help to address every one of the UN Sustainable Development Goals.

Beekeeping helps to alleviate poverty, provides good nutrition and medicine, helps to address social inclusion and wellbeing, and encourages people to protect forests and their biodiversity.



Relocation

This exhibit will be re-used at the National Honey Show 2024 and subsequent regional shows and events.