

# 2024 RHS URBAN SHOW

## Contents

|   |    |
|---|----|
| <b>2024 RHS Urban Show</b> .....          | 1  |
| Press Releases .....                      | 2  |
| Wednesday 23 August 2023.....             | 2  |
| Wednesday 6 March 2024.....               | 3  |
| Monday 25 March 2024.....                 | 4  |
| Tuesday 16 <sup>th</sup> April 2024.....  | 6  |
| Facts and Statistics .....                | 8  |
| The 2024 RHS Urban Show in Numbers: ..... | 8  |
| Exhibitor List.....                       | 8  |
| Installations .....                       | 9  |
| Content Cubes .....                       | 13 |
| Floral Displays.....                      | 15 |
| Exhibitions.....                          | 16 |
| Timetable of Talks .....                  | 18 |
| Thursday 18 <sup>th</sup> .....           | 18 |
| Friday 19 <sup>th</sup> .....             | 19 |
| Saturday 20 <sup>th</sup> .....           | 20 |
| Sunday 21 <sup>st</sup> .....             | 22 |
| Additional Information .....              | 23 |

- RHS Urban Show, 18-21 Depot Mayfield, Manchester. Show opening times: Thursday – Saturday 10am – 14:30 / 14:30-19:00. Sunday 10:00- 17:30. Press Morning is 8-10am on Thursday 18 April.
- RHS Urban Show is the RHS' first largescale indoor show dedicated to urban gardening, celebrating the growing movement of urban and city gardeners, and the increasing connection between horticulture, wellbeing and sustainable living to growing happy houseplants.
- **Aims to inspire town and city dwellers of all ages with a host of take-home ideas for city gardeners from vertical growing structures to planting up awkward urban spaces.**
- A programme of talks will take place, touching upon subjects from cut flowers to juggling plant life with work and family life, with a wide selection of indoor and outdoor plants suitable for urban growers available for purchase.

Tickets can be purchased at: <https://www.rhs.org.uk/shows-events/rhs-urban-show> or [purchased on the door.](#)

## PRESS RELEASES

Wednesday 23 August 2023

### RHS Announces its First Large Scale Indoor Show

## NEW RHS Urban Show to be held in Central Manchester, April 2024



Today, the Royal Horticultural Society (RHS) has announced its plans to hold a new Urban Show in Central Manchester. From 18 – 21 April 2024, the RHS will transform Manchester's historic former railway station, Depot Mayfield, into an urban grower's paradise full of small space gardening inspiration to encourage and inspire city dwellers to grow plants for both their indoor and outside spaces.

The RHS Urban Show will be very different to the RHS's current roster of Flower Shows, with an industrial, indoor, city centre location and immersive experience designed for those who live in cities with limited or no outdoor growing space.

Whilst urban growing will be at the heart of the show, the influence horticulture has on interior design, art, wellness, and sustainability will also be explored. There will be innovative gardening features with design inspiration for small city spaces, such as vertical gardening and urban farming along with immersive plant installations, a host of talks, advice and practical workshops and a carefully curated selection of plant nurseries selling a huge variety of houseplants and small space friendly plants.

Helena Pettit, Director of Gardens & Shows said: "In recent years there's been a real gardening boom and we believe more young people living in cities are now growing plants.

"So we are so excited to be bringing a new RHS Show dedicated to urban gardening to the centre of Manchester next year. The RHS Urban Show aims to bring gardening to a new audience and demonstrate that if you have plants, you are a gardener.

"There is so much great work already happening across the city to make it greener and we are excited to help support this growing movement. We want to get even more people living in the UK's second largest city inspired to grow plants and connect to the natural world.

"With over 80% of the UK population living in towns and cities, the new show will enable more urban dwellers to garden, especially where access to green spaces can be limited."

As part of the RHS strategy to 2030\* launched earlier this year, one priority is to open up gardening for anyone, anywhere and the new RHS Urban Show is one of the ways in which the RHS hopes to do this.

Further details about the show will be released as content is confirmed. For anyone interested in getting involved visit: [www.rhs.org.uk/shows-events/exhibit-at-a-show](http://www.rhs.org.uk/shows-events/exhibit-at-a-show)

**Tickets for all 2024 RHS Shows go on sale to RHS Members on Monday 21 September and to the public on Monday 28 September. To book visit: [www.rhs.org.uk/shows-events](http://www.rhs.org.uk/shows-events)**

Wednesday 6 March 2024

## **RHS helps Manchester commuters seed the day**

To celebrate the Royal Horticultural Society's (RHS) 220<sup>th</sup> anniversary and the launch of its brand new show, RHS Urban Show at Depot Mayfield, people travelling on Metrolink in Manchester will be greeted with a packet of seeds when they get on board this Thursday (7 March).

A total of 10,000 seed packets will be left on every tram seat and handed out at the Market Street Metrolink stop on Thursday, collectively containing enough seeds for every person in Manchester.

Containing either rocket, coriander, chilli or pepper seeds, all small plants ideal for any size garden or windowsill, anyone will be able to sow and grow these seeds with whatever space they have.

The seeds are being given out as part of the new RHS Urban Show which opens for the first time in April this year. Packed with immersive installations, inspiration for any size city garden, and houseplant advice, the show will be a one stop shop for all things urban gardening.

Lex Falleyn, show manager, said: "The RHS believes that if you have one plant, you are a gardener, and these seeds represent just one of the ways you can get growing in a city. RHS Urban Show looks forward to celebrating the greening projects within Manchester and hopes that both the seeds and the show will help grow a new generation of gardeners."

Danny Vaughan, TfGM's Head of Metrolink, said: "Metrolink continues to be one of the best ways to get around the city centre, and the Piccadilly tram stop is just a short walk away from where the RHS Urban Show will be held at Depot Mayfield.

"We're delighted to be supporting the Royal Horticultural Society opening its new show in Manchester, and we hope this gardening giveaway will inspire passengers to put these seeds to good use."

Guy Barter, RHS Chief Horticulturalist gives his top tips for growing rocket, coriander, chilli and pepper seeds:

Rocket Wild Grazia is ideal for balcony and patio gardens:

- Sow a few seeds in a big pot, leaving 10cm between each seed and keep inside until they have germinated. Sow a few seeds at a time, three weeks apart to allow for a continuous supply of rocket.

- Pick leaves as soon as they are big enough to encourage new growth.
- Leave a few plants to flower to provide nectar and pollen for insects as well as seeds for future crops.

Coriander 'Confetti' can be grown both indoors in good light and outside in pots once germinated:

- Make small sowings three weeks apart as coriander flowers quickly, which ends the supply of flavoursome foliage.
- After flowering, seeds mature in about two months and can be used in cooking or saved for future crops.
- When growing inside, cut as mini leaves when 5-7cm tall to use as a garnish.

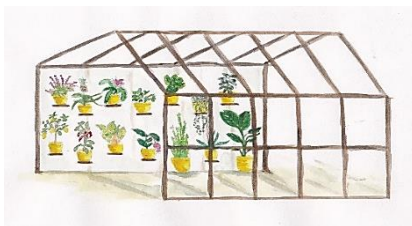
Chillis and peppers are great for urban environments as the extra city heat helps with colour, flavour and speed of growth:

- Sow seeds as soon as possible as it takes a while to grow to cropping size and keep them inside in a warm, bright spot.
- Plant seeds in a black pot if you can to absorb the sun's heat, giving extra warmth which chillis and peppers love.
- Plants can be placed outside in a sunny, sheltered spot once warm enough, usually in June.

**RHS Urban Show runs from 18-21 April 2024 at Depot Mayfield, Manchester and tickets are available online at [rhs.org.uk/urbanshow](https://rhs.org.uk/urbanshow)**

Monday 25 March 2024

## RHS Urban Show: Growing in the City



*East facing balcony, part of the RHS City Spaces: Cloudscape by Jason Williams -'Happy Houseplants' by GrowTropicals*

*- Pop Culture Planting: Punk Rockery. The New Wave and 24-Hour Party Planting by Amanda Grimes-*

What is urban gardening? This, and other key questions surrounding the growing urban gardening movement will be raised at the inaugural RHS Urban Show, from 18 to 21 April at the Depot Mayfield in Manchester.

In a major milestone for the Royal Horticultural Society as it celebrates 220 years of enriching people's lives through horticulture, the charity's first large scale indoor show explores the cutting-edge of modern gardening, from a seven-garden vision for a greener city to vertical structures for awkward urban spaces, the secret to growing happy houseplants and a horticultural exhibit celebrating the heyday of the Manchester scene's Hacienda days.

Major exhibits include *RHS City Spaces: Cloudscape* by Manchester Cloud Gardener Jason Williams, who challenges horticultural retailers, local authorities and developers to rethink the ways in which they interact with communities with a vision of how to make our towns and cities greener. Designed through a collaborative process involving students on Manchester Metropolitan University's Rise programme and Notcutts Garden Centre, the exhibit brings together four balconies each facing north, south, east and west with a maximum budget of £500, a north-facing shaded rented patio, an urban farm and a communal garden.

Williams said that *RHS City Spaces: Cloudscape* addresses different residents' needs, microclimates and pay brackets. He added: "The concept as a whole is an ambitious blueprint of how we can bring a city together. These are not show gardens, they are learning exhibits designed to teach residents, local authorities, retail and developers how we can all improve to make our towns and cities greener."

Four-time RHS Chelsea Flower Show medal-winners GrowTropicals reveal the secret to which houseplants are best suited to your home's unique environment. Their exhibit featuring dozens of plants, from the rare to the exotic, will be grouped together into three structures featuring the best shade-loving plants for north-facing rooms, thirstier varieties ideal for humid sports or sun-worshippers which love sunny windowsills.

Midlands-based designer Amanda Grimes brings her exhibit, *Pop Culture Planting: Punk Rockery, the New Wave and 24-Hour Party Planting*, a two-part installation set over three years showing a design at the time of planting, one year on and two years on. Her aim is to give new and inexperienced gardeners the confidence and inspiration to "just go for it" by showing visitors what they can expect as a garden develops naturally over time, even with poor soil or rubble.

She said: "Punk Rockery hits Manchester in the same way the Sex Pistols did in June 1976, though possibly with less swearing and a bigger audience. That now-legendary gig was the spark that lit the touch paper of the whole Manchester New Wave music scene which included the Buzzcocks, Joy Division/New Order, The Fall, Magazine, The Smiths and Factory Records, and went on to inspire so many more. The installation is named in honour of all that creativity which was, and still is, uniquely Mancunian.

"24-Hour Party Planting is a celebration of Manchester's thriving nightlife, restaurant and entertainment scene. It references the Happy Mondays' track of the same name, and with it the hedonistic days of the Hacienda. It traces that legacy through to 2024 and the incredibly diverse, vibrant and endlessly creative energy of the Gay Village, Northern Quarter, Salford and beyond."

The RHS Urban Show, sponsored by Mad About Land, also debuts "content cubes" for gardeners with small spaces, including RHS Flower Show Tatton Park 2023's People's Choice and gold medal-winner Conal McGuire's *Urban Shade* which utilises modular 'grow frames' offering a creative, versatile and eco-friendly solution for growing in awkward urban spaces which can be reconfigured in different ways.

A programme of talks also takes place touching upon subjects from cut flowers to juggling plant life with work and family life. A host of shopping opportunities will be on offer, from a variety of indoor and outdoor plants suitable for urban growers to a new clothing range by Mad About Land, as well as pots and macramé.

RHS-run workshops including how to make your own terrariums will also take place, while free guided tours of Mayfield Park will also be available for guests to hear from designers and architects about the regeneration of the area.

Lex Falley, show manager for the RHS Urban Show, said: “Urban Gardening is diverse and dynamic and the inaugural RHS Urban Show is an exciting opportunity to explore the important role gardening plays in greening up cities.

“We’ve chosen to work with a wide range of gardeners, from award-winning designers to community groups to enthusiasts who juggle gardening with day-to-day life. We hope this will bring a balance of relevant yet realistic advice to get people growing.”

Tickets can be purchased at: <https://www.rhs.org.uk/shows-events/rhs-urban-show>

Tuesday 16<sup>th</sup> April 2024

## RHS Urban Show: Ellie the Robot Dog, an indoor Urban Forest and Tinie Tempah



*Grow Your Own Way, a content cube at the RHS Urban Show from the University of Manchester*

The Royal Horticultural Society’s first ever large-scale indoor gardening show opens this week featuring a pair of robotic detection dogs scrambling across a show garden and an indoor Urban Forest amid cutting-edge designs and inspirational ideas for the nation’s newest gardeners.

The dogs have been adapted with scanners by the University of Plymouth and designer Kenny Wilding-Raybould of the Grown That Way collective as part of their exhibit, *The Wider Web*, which uses agri-tech as robots, sensors and automation to extract data from the soil and use it to increase biodiversity to make an area more productive.

Low-lying data collected by Ellie the Robot Dog and her sidekick, Elmo, will be fed back into a “living lab” which will crunch the numbers to reveal a picture of the soil. *The Wider Web* will also demonstrate how hydroponics can adapt any enclosed space, such as a disused shed, into a light and water-fed growing system, and how drone imagery can also feed information back to enable better use of diminishing land.

Other exhibits to feature at the four-day event at the Depot Mayfield in Manchester, opening on Thursday 18 April until Sunday 21 April, include an indoor Urban Forest designed by last year’s RHS Young Designer of the Year Nathan Webster, while renowned musician Tinie Tempah joins Chase Distillery at their ‘Forage Your Own Garnish’ bar alongside award-winning designer Tom Massey.

*RHS Urban Forest*, set to be one of the UK’s largest indoor forests with a footprint of 286 sq m, and a height of 6m, has been inspired by Britain’s forests and the atmosphere and sense of theatre people feel when in these locations. Featuring 23 trees, including *Pinus sylvestris* and *Betula nigra*, it aims to highlight the importance of urban foresting for mental and environmental health, and the importance of retaining existing forests and protecting their future.

Jack Hodgson will showcase his *Mushroom and Microgreen Growtainer* demonstrating how space, or lack of, is no barrier to growing your own superfoods in anything from milk cartons to buckets thrown away by local cafes. Grown together, microgreens and mushrooms utilise their symbiotic relationship to aid each other’s growth.

Manchester Urban Diggers will present *Logarithm*, a spiral garden inspired by the recurrence of the golden ratio in natural shapes filled with edible plants designed to maximise growing within the smallest of spaces and built from found and foraged materials, while visitors can learn creative and DIY solutions to capturing rainwater around their homes thanks to Leon Davis’ *Rainwater Capture Cube*.

In the Green Gallery, the Kissing the Eaves exhibition of visual art invites viewers into three very different rooms offering artwork and ideas, lichen, moss and fungus as art exhibits, and presents a journey through Manchester’s post-industrial landscape.

Born from the Herefordshire countryside with flavours inspired by the wild, Chase Distillery will be the ‘official gin and vodka’ of RHS Urban Show, as part of their ambition to bring a slice of the countryside into urban areas. Tempah said: “Nature has always been a muse of mine when it comes to creating, and through our collaboration with Chase Distillery and the RHS Urban Show, we’re encouraging everyone to tap into their creativity and embrace the beauty of the natural world and everything it has to offer.”

**Lex Falley, show manager for the RHS Urban Show, said:** “RHS Urban Show is a chance for a new audience to gain new roots, or grow their existing knowledge on ways to enjoy horticulture in the city. From indoor plants and balconies on a budget, to botanical art to inspirational talks -- we hope this show will encourage visitors to grow in their own way. If visitors have limited space, then there’s opportunities to learn about cutting edge horticultural technology, plant based careers and community gardening through displays and talks.”

**Tickets can be purchased at:** <https://www.rhs.org.uk/shows-events/rhs-urban-show>

## FACTS AND STATISTICS

- The RHS Urban Show is run by the Royal Horticultural Society, the UK's leading gardening charity
- As part of the [RHS strategy to 2030](#) launched in 2023, one priority of the charity is to open up gardening for anyone, anywhere and the new RHS Urban Show is one of the ways in which the RHS hopes to do this.

### Why is urban greening so important?

- **83% of the UK currently lives in urban spaces**, and that figure is expected to rise to **86% by 2030**.
- At the same time, the planet is warming, and **by 2050** Manchester is predicted to have a climate comparable to **Montevideo, Uruguay** a [2019 study](#) by Crowther Lab reports
- Data taken from the *Growing a Green Economy* report shows that:
  - Green roof temperatures can be **15 - 20° cooler** than conventional roofs and can **reduce city-wide ambient temperatures** by up to **2.7°**
  - Cooling from urban trees and vegetation was predicted as saving up to **£22 million** in annual energy consumption across inner London alone
  - The value of **removing air pollution by vegetation alone** to the UK was calculated at **£1.3bn in savings to the NHS in 2017**
  - People who live **within 500 metres** of accessible green space are **24%** more likely to meet **30 minutes of exercise levels of physical activity**.

### The 2024 RHS Urban Show in Numbers:

- **Over 150 horticultural exhibits** will fill the **24-acre** site.
- **25 Lead Designers** are involved in this year's RHS Urban Show
- The whole show has been built from scratch in **8 days and will be dismantled in 3 days**.
- The cycle of planning for the show lasts approximately **8 months**.
- **200** people are involved in building the exhibits.
- **80** RHS Staff and around **50** volunteers will help make the show happen.

## EXHIBITOR LIST

Please note: All information is provided by exhibitors and is subject to change.

For images and further information including full planting lists, please contact [showspr@rhs.org.uk](mailto:showspr@rhs.org.uk)

A full list of exhibitors taking part in this year's RHS Urban Show can be found here: [A-Z of exhibitors at RHS Urban Show 2024 / RHS Gardening](#)



## Installations

### 1) *Mad about Land*

Website: [www.madaboutland.com](http://www.madaboutland.com)

Mad about Land are the RHS Urban Show's headline sponsor for 2024.

They have created a collection of garments that are made specifically for the joy of gardening. Every piece in their collection is crafted with the gardener's comfort and style in mind. The main display is built from compostable cardboard boxes, host to mini wildflower meadows that highlight how you can garden in any space, large or small, and promote biodiversity even with a garden the size of a cardboard box. The structure is designed to be dismantled so that attendees can take and plant each individual box at the end of the show, encouraging biodiversity and minimal waste.



### 2) *Chase*

Designer: Tom Massey

Website: <https://chasedistillery.co.uk>

Chase is proud to be the official gin and vodka sponsor of the RHS Urban Show 2024. Born in the picturesque Herefordshire countryside, the Chase award-winning range includes delicious and bold-tasting gin and vodkas inspired by the wilds of the British countryside. They will be at the RHS Urban Show alongside RHS Award-winning gardener Tom Massey and Tinie Tempah, as Chase brings a slice of the countryside into the city.

### 3) *Happy Houseplants*

Designer: Grow Tropicals c/o Jacob James

Website: [www.growtropicals.com](http://www.growtropicals.com)

Media Contact: *Reece Tolworthy*

Media Contact Details: [reece@growtropicals.com](mailto:reece@growtropicals.com) / +44 7342 636447

This year's RHS Urban Show introduces an innovative houseplant feature designed to deepen your understanding of selecting the perfect houseplant tailored to your home's unique environment. Emphasising the importance of compatibility between your houseplant and its surroundings, this exhibit showcases an impressive array of 42 plants, ranging from the familiar to the rare and exotic. These plants are thoughtfully organised into three distinct categories based on their preference for sunlight, shade, or humidity, ensuring you can easily find a plant that thrives in your home's conditions.



For each plant, GrowTropicals has provided comprehensive information that includes whether the plant is safe for pets, its price range, specific light and water needs, and its edibility.

#### **4) The RHS and MEN Pub Garden**

Designer: Emma Tipping

Website: [www.emmatamsintipping.co.uk](http://www.emmatamsintipping.co.uk)

*Media Contact: Emma Tipping*

*Media Contact Details: [emmatipping@gmail.com](mailto:emmatipping@gmail.com) / 07871312086*

Playing on the symbol of the Manchester bee, the designer has been informally calling this exhibit the 'Bee(r) Garden' and has created a pollinator-friendly space by including beneficial plants with different flowering periods. During the show, the exhibit will enclose a bar area where people can grab some refreshments and take a break from exploring all the exhibits. It aims to be a garden with a bit of a 'buzz' about it. The garden features versatile planters made from long metal troughs that can be reconfigured to suit any pub garden, which in cities are usually small and unusually shaped.



The RHS and Manchester Evening News have partnered on this project and have run a competition for a Greater Manchester pub to win the garden after the show, with the winner being announced on the opening day.

#### **5) RHS City Scape: Cloudscape**

Designer: Jason Williams

Website: [www.cloudgardeneruk.co.uk](http://www.cloudgardeneruk.co.uk)

*Media Contact: Jason Williams*

*Media Contact Details: [cloudscape@cloudgardeneruk.com](mailto:cloudscape@cloudgardeneruk.com) / 07748700380*

*RHS City Spaces: Cloudscape* is a seven-garden vision for a greener city, bringing together four balcony gardens, a shaded rented patio, an urban farm, and a communal garden.

From encouraging young people into horticulture, to addressing different residents' needs, microclimates, and pay brackets. *RHS City Spaces: Cloudscape* also challenges horticultural retail, local authorities, and developers to rethink how they interact with communities. This exhibit has been designed through a collaborative process, demonstrating how by working together, everyone can benefit from urban greening.

## Four Balcony Garden

The four balcony gardens, each facing north, south, east, and west have been co-designed by students from Manchester Metropolitan University's Rise program. Each balcony has been designed with a budget of £500, to show what is achievable for less. After the show, the balcony gardens will be relocated to the university where students will measure their impact on local biodiversity.



## Rented Patio with Notcutts

A north facing shady rented patio has been co-designed with Notcutts Garden Centre. This garden uses Notcutts products to showcase what can be done in a small, rented home with full shade. The garden will be relocated to the store in Ashton, Manchester. Container garden workshops will take place at the show, delivered by Jason Williams.



## The Urban Farm

With the help of North West in Bloom will showcase how developers could create an allotment in urban developments to help build a community and improve greenspace. The urban farm will be relocated into a development to show developers what that they could implement in a community garden as part of plans for new and existing developments.



## A Communal Garden

A communal garden has been designed to show how developers can move away from lacklustre planting and make a better space for their residents, improving mental health and making new habitats for urban wildlife. This garden will also be relocated to a development after the show.

## **6) Pop Culture Planting: Punk Rockery. The New Wave and 24-Hour Party Planting**

Designer: Amanda Grimes

Website: [www.sparkgardens.co.uk](http://www.sparkgardens.co.uk)

Media Contact: Amanda Grimes

Media Contact Details: [amanda@sparkgardens.co.uk](mailto:amanda@sparkgardens.co.uk) / 07793545441

This installation is about giving new and inexperienced gardeners the confidence and inspiration to go for it. These are not typical plant-perfect show gardens, but instead give visitors a more realistic view of what it means to create a planting scheme. Gardens are rarely, if ever, 'instant'. To this end, this two-part installation is set over three years, with the design repeated to illustrate the scheme at the time of planting, at one year on, and after two years. Not everything will be in flower or full growth. Instead, this approach aims to show visitors what they can expect as a garden develops naturally over time. That a little planning and patience can create relatively low-maintenance, but high-interest planting.

*Punk Rockery - the New Wave* is about embracing a punk DIY spirit, inspiring people to make a garden from scratch out of what they have got or can salvage, without needing to be a horticultural or design genius. Plants have been chosen to suit the northern climate with varieties that can cope with a regular drenching as well as periods of drought. Materials reflect Manchester's grand red brick buildings and more modest terraces, its erstwhile factories, mills and depots, and other remnants of the city's industrial past uncovered by its current renewal.



*24-Hour Party Planting* is a celebration of Manchester's thriving nightlife, restaurant, and entertainment scene. It picks up where Punk Rockery left off, in musical terms at least, referencing the Happy Mondays' track of the same name. It traces that legacy through to 2024 and the incredibly diverse, vibrant, and endlessly creative energy of the Gay Village, Northern Quarter, Salford and beyond. Horticulturally, the scheme introduces novice gardeners to the idea of successional planting as a way of keeping the 'party' going. How they can have colour and texture now and in four months' time. Planting is bold, colourful, and fun - just like a good night out should be. The design features three levels of planting that could be replicated as a whole or in part, making the scheme flexible for a range of spaces. Plants are suitable for containers, roof terraces and balconies as well as new urban gardens, and will include bulbs and annuals.

## 7) *RHS Urban Forest*

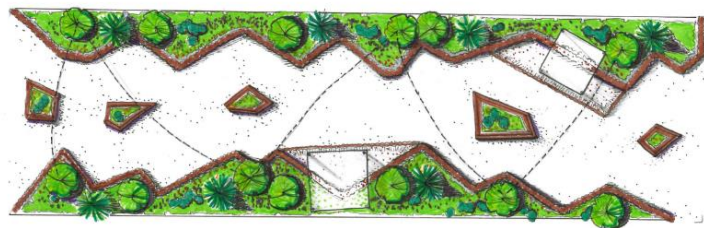
Designer: Nathan Webster

Website: [www.wrightlandscapes.co.uk](http://www.wrightlandscapes.co.uk)

Media Contact: *Nathan Webster*

Media Contact Details: [nathanwebster@wrightlandscapes.co.uk](mailto:nathanwebster@wrightlandscapes.co.uk) / 07493093139

Designer, Nathan Webster brings the atmosphere and theatre of natural woodland to Depot Mayfield. Nathan strongly believes in the importance of urban foresting and the retention of existing forests and their futures. *Off the Grid*, his Gold and Best in Show garden at RHS Flower Show Tatton Park recreated an ancient woodland, that garden has now provided the basis for his latest project – a forest in the heart of the city. At the RHS Urban Show in Manchester visitors will be able to stroll through this immersive experience created by the RHS Young Designer of the Year 2023 and feel the benefits of being immersed in nature.



## 8) *Title Unknown*

Designer: Daniell Musaheb

Website: [www.ardwickclimateaction.co.uk](http://www.ardwickclimateaction.co.uk)

*Media Contact: Daniell Musaheb*

*Media Contact Details: [dmosaheb@outlook.com](mailto:dmosaheb@outlook.com) / 07807391883*

*Title Unknown* is purposely ambiguous. In an imagined and potentially near future setting with the loss of habitats due to human activity, the space is designed to offer an evocative and almost clinical setting for nature. In the monolith sits a tree with plant life suspended in time, imprisoned and entombed. The use of heavily ionised soil hints towards a futuristic landscape, denoting a radical change in climate.

A theatrical conceptual design gives people the space to reflect about how they interact with nature and how a future landscape may become reality. *Title Unknown* actively asks spectators to question their behaviour and relationship to the natural world. Using art as the tool to evoke thought in human processes and their effects on nature, the exhibit directly asks people to consider their roles in aiding and abetting the climate crisis and encourages them to be a force for positive change in urban landscapes and design.

### **9) Moss and Life Cycle**

Designers: Marcin Ruta and Claire Page

Website: [www.mossclerks.co.uk](http://www.mossclerks.co.uk)

*Media Contact: Marcin Ruta*

*Media Contact Details: [info@mossclerks.co.uk](mailto:info@mossclerks.co.uk) / 07388567384*

This exhibit is an art installation about the cycles of life, and the human need to connect with nature. Moss Clerks are one of the UK's few landscaping, terrarium, and bog moss suppliers with GB plant passports. Their display showcases this often-overlooked plant and challenges visitors to change their mindset around moss. The moss varieties displayed are ideal for tricky shaded areas of the garden or creating a live terrarium.

## Content Cubes

### **1) Urban Shade**

Designer: Conal McGuire

Website: [www.conalstudio.com](http://www.conalstudio.com)

*Media Contact: Conal McGuire*

*Media Contact Details: [info@conalstudio.com](mailto:info@conalstudio.com) / 07597997676*

*Urban Shade* showcases modular 'grow frames', offering up a creative, versatile, and eco-friendly solution for growing in awkward urban spaces. The grow frame system was a key feature in designer, Conal McGuire's RHS Tatton 2023 'Gold Medal', 'Best in Category' and 'People's Choice' award winning -garden.

*Urban Shade* offers visitors a unique design solution to increase functionality, boost biodiversity, and help future-proof challenging outdoor spaces. Because of its transportability, the design enables those living in rental accommodation, or those who may have access restrictions to cultivate their outdoor space.

The grow frame system maximises growing potential by utilising empty vertical space. Its small footprint, seamless design, and versatility in configuration enables its application in an array of environments, from balconies and roof-terraces to city gardens and courtyards.

Visitors can immerse themselves in a miniature urban oasis, with shade-tolerant species bursting from sculptural steel planters and weaving around suspended wildlife habitats.



## **2) Rainwater Capture Cube**

Designer: Leon Davis  
Website: [www.leondavis.co.uk/](http://www.leondavis.co.uk/)

Media Contact: Crystal Orton  
Media Contact Details: [crystal.orton@environment-agency.gov.uk](mailto:crystal.orton@environment-agency.gov.uk) / 07826894632

The *Rainwater Capture Cube* seeks to combat the widespread replacement of planting and greenspace with hard surfaces surrounding urban homes, which increases rainfall run off, and contributes to localised flooding during heavy rain. This initiative forms part of a wider educational and awareness raising project being led by the North West Regional Flood and Coastal Committee (North West RFCC) in partnership with the Environment Agency, United Utilities, and Lancashire County Council.

The loss of greenspace around homes reduces biodiversity and wildlife habitats, and increases urban temperatures, while the absence of planting provides no opportunity for pollutants within the air and rainwater run-off to be filtered out. Finally, it is well known that access to greenspace boosts householders' physical and mental wellbeing.

This project seeks to inform the public about how best to store and reuse rainwater within their outdoor space to improve the environment and resilience to rainfall.



## **3) Mushroom and Microgreen Growtainer**

Designer: Jack Hodgson (Jacks Patch)  
Website: [www.jackspatch.co.uk](http://www.jackspatch.co.uk)

Media Contact: Ash Griffiths  
Media Contact Details: [ashgriffith@rhs.org.uk](mailto:ashgriffith@rhs.org.uk) / 07970138318

Jack Hodgson will be exhibiting his microgreens on chrome racking full of trays of different sizes, lots of colours and different varieties of microgreens to show the vast array it is possible to grow. Mushrooms will be in tents with racking, blue LED lights and humidifiers to mimic ideal growth conditions. The exhibit features three varieties, grey, yellow and pink oyster mushrooms. The designer hopes that the colours, the lights, the style, and the ease of this way of growing will inspire visitors to start growing their own microgreens or mushrooms at home.

#### **4) Biodiverse containers**

Designer: Beth Chatto's Plants and Gardens

Website: [www.bethchatto.co.uk](http://www.bethchatto.co.uk)

*Media Contact: Leanne Crozier*

*Media Contact Details: [leanne@bethchatto.co.uk](mailto:leanne@bethchatto.co.uk) / 07718481403*

This exhibit demonstrates Beth Chatto's mantra of 'right plant, right place - any space'. Recognising that not everyone has a garden, and that many gardeners may be in rented accommodation, or gardening from a concrete patio, yard, or balcony, this exhibit will showcase that plants can be for any outdoor space. The design uses outdoor container planted perennials, to show how plants can become a beloved piece of furniture, or a member of the family, that moves with you. As well as looking great, all the plants used are hardy and will live for many years to come. They are low maintenance, requiring low levels of water, and they offer habitat and food for a range of wildlife.

### Floral Displays

#### **1) Bloom Different**

Designer: Victoria Harris

Website: <https://www.powerplantflowers.co.uk/>

*Media Contact: Victoria Harris*

*Media Contact Details: [hello@powerplantflowers.co.uk](mailto:hello@powerplantflowers.co.uk) / 07841456723*

*Bloom Different* is a contemporary floral sculpture by local Manchester floral design studio POWERPLANT flowers, celebrating the joyful and creative culture of our northern cities. Created using sustainable methods and reusable wire mechanics, the sculpture challenges the outdated notion that traditional and harmful floral foam is the only way to create lasting, dynamic floral displays.

#### **2) Textural Immersion**

Designer: Hannah Clark

Website: [www.thebudandpot.co.uk](http://www.thebudandpot.co.uk)

*Media Contact: Hannah Clark*

*Media Contact Details: [info@thebudandpot.co.uk](mailto:info@thebudandpot.co.uk) / 07496890781*

Inspired by the city's rich palette of colours and textures, this creation celebrates the marriage of nature and urbanity, weaving together organic materials to evoke the essence of

Manchester's streets. At the heart of the installation lies a focus on texture, inviting viewers to experience the city's diverse surfaces in a new light. Waves and depths emerge from the arrangement, drawing the audience into a sensory exploration where each petal and stem tells a story of resilience and beauty found amidst the concrete jungle. Dried florals in taupe and grey form the backbone of the composition, mirroring the weathered buildings, new high rises and streets that define Manchester's character. Yet, amidst this muted palette, bursts of vibrant fresh florals emerge. This explosion of vitality and energy echoes the spirit of a city constantly reinventing itself.

### **3) *Reclaimed by Nature***

Designers: David Jayet-Laraffe

Website: [www.frogflowers.co.uk](http://www.frogflowers.co.uk)

*Media Contact: David Jayet-Laraffe*

*Media Contact Details: [david@frogflowers.co.uk](mailto:david@frogflowers.co.uk) / 07930436925*

Inside a rough metallic cage, the designer has created an organic floral form with hundreds of different stems of fresh flowers and foliage, which is reclaiming its territory. This installation is designed to vividly illustrate the strength of the natural world as it gradually invades this abandoned structure, to reflect the way in which Depot Mayfield has been reclaimed by nature for the RHS Urban Show.

## Exhibitions

### **1) *The Wider Web***

Designer: Kenny Wilding-Raybould, Yve Metcalfe-Tyrell, Jake Gibson Shaw-Sutton

Website: <https://grownthatway.com>

*Media Contact: Kenny Wilding-Raybould*

*Media Contact Details: [kenny@grownthatway.com](mailto:kenny@grownthatway.com) / 07943410991*

*The Wider Web* exhibit is an interactive agri-tech collaboration between The University of Plymouth, Grown That Way, and the Co-op Carbon foundation, working with communities to access agricultural technology (agri-tech) to aid in more resilient growing and monitoring systems.

The exhibit showcases innovation in agri-tech and how it can relate to communities and small growers. The aim is to inform, educate and widen exposure to agri-tech so it is not seen as an alien concept. The technology will be part of a useful toolkit, enabling better



decisions, underpinned by appropriate technology to allow more holistic approaches. Rather than replacing nature or labour with technology; it is about using agri-tech such as robots, sensors, and automation to allow us to know more about areas of the natural world we cannot see, such as microbes and mini-beasts in soil. This will help us to increase biodiversity where it may not be as productive due to human damage.

The space will contain an interactive environmental living lab, that links to wider technology. In the foreground of the space, will be planted areas hosting drones, a hydroponic system and robotic dogs, used for biodiversity and ground surveying. These robotic dogs are known as ELLIE & ELLMO, (environmental living lab investigative explorer and monitoring officer). All the information links to visual screens and the living lab to show information in real time and to give a real visual understanding of how agri-tech works and how it can help communities.



## **2) *The Green Gallery: Kissing the Eaves***

Designers: Amy Platt, Christina Purvis, Jasmine Skellern

Media Contact: Amy Platt

Media Contact Details: [amyplatt11@outlook.com](mailto:amyplatt11@outlook.com) / 07473160630

*Kissing the Eaves* begins in the muffled depths of mudstone that lie beneath Mancunia, where ancient tectonic shift ordained us a flatland, destined for bog and mire. Here grows *The Green Gallery*, intent on tangling viewers in its mossy tendrils. A space teeming with art-life, gently creeping over three rooms, formed by a human–fungal partnership. *Kissing the Eaves* invites you to meander down the muddy ginnel that separates the city from its flora and fauna. Included in this exhibit are some prints from the RHS archives detailing flora and fauna found in and around Manchester in the 1860s, including *Drosera intermedia* and *Drosera anglica*, also known as the love nest sundew.

## TIMETABLE OF TALKS

Thursday 18<sup>th</sup>

| <b>THURSDAY 18<sup>th</sup> – Main Stage</b> |  |
|--|--|
| <i>Morning</i>                               |  |
| 10.40am                                      | <b>The power of planting; a spotlight on Castlefield Viaduct – Manchester’s sky garden</b><br><i>Andy Jasper, Director of Gardens and Parklands, National Trust and Pam Smith, Senior National Consultant, Gardens and Parklands, National Trust</i> |
| 11.20am                                      | <b>Chase presents ‘Inspired by the Wild’</b><br><i>In conversation with Tinie Tempah and Tom Massey</i>  |
| 12noon                                       | <b>Living the biosecurity life</b><br><i>Dario Spagnoli, RHS Science</i>   |
| 12.40pm                                      | <b>How to never kill a houseplant again</b><br><i>Tony Le-Britton, Not Another Jungle</i>  |
| 1.20pm                                       | <b>The somatic impact of looking after plants</b><br><i>Rachel Cruikshank</i>  |
| 2pm  | <b>Growing a garden: a peek into prop</b><br><i>Lisa Hudson, RHS Bridgewater</i>   |
| <i>Afternoon</i>                             |  |
| 3pm  | <b>The power of planting; a spotlight on Castlefield Viaduct – Manchester’s sky garden</b><br><i>Andy Jasper, Director of Gardens and Parklands, National Trust and Pam Smith, Senior National Consultant, Gardens and Parklands, National Trust</i> |
| 3.40pm                                       | <b>Chase presents ‘Inspired by the Wild’</b><br><i>In conversation with Tinie Tempah and Tom Massey</i>  |
| 4.40pm                                       | <b>Living the biosecurity life</b><br><i>Dario Spagnoli, RHS Science</i>   |
| 5pm  | <b>How to never kill a houseplant again</b><br><i>Tony Le-Britton, Not Another Jungle</i>  |
| 5.40pm                                       | <b>The somatic impact of looking after plants</b><br><i>Rachel Cruikshank</i>  |
| 6.20pm                                       | <b>Houseplant bingo</b><br><i>Michael Perry</i>  |

| <b>THURSDAY 18<sup>th</sup> – Our Green Spaces</b> |  |
|--|--|
| <i>Morning</i>                                     |  |
| 10.30am  | <b>Supporting community groups for a greener Manchester</b><br><i>Will White, Manchester City Council</i>                |
| 11am   | <b>Local nature recovery</b><br><i>Sam Evans, GMCA</i>   |
| 11.30am  | <b>Come and have a grow if you think you’re chard enough</b><br><i>Kieron McGlasson, Sow the City</i>                    |
| 12noon   | <b>Skills development &amp; training opportunities for community gardeners</b><br><i>Helen Eaton, Myerscough College</i> |

|                  |   |
|------------------|---|
| 12.30pm          | <b>Biodiversity and sustainability in an urban area - you can play your part!</b><br>Sharon Martin                |
| 1.30pm           | <b>Welcome to the National Garden Scheme</b><br>Laura Cartensen, NGS  |
| 2pm              | <b>The importance of trees in the concrete jungle</b><br>Pete Stringer, City of Trees                             |
| 2.30pm           | <b>Urban meadows</b><br>Richard Scott and Christine Leung, ScouseFlowerHouse                                      |
| <b>Afternoon</b> |   |
| 3pm              | <b>Local nature recovery</b><br>Sam Evans, GMCA   |
| 3.30pm           | <b>Come and have a grow if you think you're chard enough</b><br>Kieron McGlasson, Sow the City                    |
| 4pm              | <b>Skills development &amp; training opportunities for community gardeners</b><br>Helen Eaton, Myerscough College |
| 4.30pm           | <b>Biodiversity and sustainability in an urban area - you can play your part!</b><br>Sharon Martin                |
| 5.30pm           | <b>Welcome to the National Garden Scheme</b><br>Laura Cartensen, NGS  |
| 6pm              | <b>The importance of trees in the concrete jungle</b><br>Pete Stringer, City of Trees                             |

## Friday 19<sup>th</sup>

| <b>FRIDAY 19<sup>th</sup> – Main Stage</b> |  |
|--|--|
| <b>Morning</b>                             |  |
| 10.40am                                    | <b>How to never kill a houseplant again</b><br>Tony Le-Britton, Not Another Jungle |
| 11.20am                                    | <b>Grow a meal in a pot</b><br>Charly Bourne, RHS Bridgewater                      |
| 12noon                                     | <b>Houseplants in the city</b><br>Paul Maccabe, @Paulsunderplants                  |
| 12.40pm                                    | <b>Growing your own with the family</b><br>Amber, Amber's Allotment                |
| 1.20pm                                     | <b>Plant-based careers</b><br>Emma Cleal, RHS Bridgewater                          |
| 2pm  | <b>Houseplant bingo</b><br>Michael Perry   |
| <b>Afternoon</b>                           |  |
| 3pm  | <b>How to never kill a houseplant again</b><br>Tony Le-Britton, Not Another Jungle |
| 3.40pm                                     | <b>Sowing seeds indoors</b><br>Emma Real-Davis                                     |
| 4.40pm                                     | <b>Houseplants in the city</b><br>Paul Maccabe, @Paulsunderplants                  |
| 5pm  | <b>Growing your own with the family</b><br>Amber, Amber's Allotment                |
| 5.40pm                                     | <b>Houseplant bingo</b><br>Michael Perry   |

## FRIDAY 19<sup>th</sup> – Our Green Spaces

| <i>Morning</i>   |   |
|------------------|---|
| <b>10.30am</b>   | <b>Food &amp; garden waste in Greater Manchester</b><br>Faye Knowles Woodhead,<br>Recycle for Greater Manchester (R4GM) |
| <b>11am</b>      | <b>Growing wellbeing in community gardens - tips and ideas</b><br>Sue Jeffries  |
| <b>11.30am</b>   | <b>Come and have a grow if you think you're chard enough</b><br>Kieron McGlasson, Sow the City                          |
| <b>12noon</b>    | <b>Skills development &amp; training opportunities for community gardeners</b><br>Helen Eaton, Myerscough College       |
| <b>12.30pm</b>   | <b>Local Nature Discovery Strategy</b><br>Rachel Morrison, GMCA   |
| <b>1pm</b>       | <b>Supporting community groups for a greener Manchester</b><br>Will White, Manchester City Council                      |
| <b>1.30pm</b>    | <b>Welcome to the National Garden Scheme</b><br>Laura Cartensen, NGS  |
| <i>Afternoon</i> |   |
| <b>3pm</b>       | <b>Come and have a grow if you think you're chard enough</b><br>Kieron McGlasson, Sow the City                          |
| <b>3.30pm</b>    | <b>Growing wellbeing in community gardens - tips and ideas</b><br>Sue Jeffries  |
| <b>4pm</b>       | <b>Skills development &amp; training opportunities for community gardeners</b><br>Helen Eaton, Myerscough College       |
| <b>4.30pm</b>    | <b>Local Nature Recovery Strategy</b><br>Rachel Morrison, GMCA  |
| <b>5pm</b>       | <b>Food &amp; garden waste in Greater Manchester</b><br>Faye Knowles Woodhead,<br>Recycle for Greater Manchester (R4GM) |
| <b>5.30pm</b>    | <b>Welcome to the National Garden Scheme</b><br>Sue Beacon & Laura Carstensen, NGS                                      |

## Saturday 20<sup>th</sup>

### SATURDAY 20<sup>th</sup> – Main Stage

| <i>Morning</i> |   |
|----------------|---|
| <b>10.40am</b> | <b>Joe's top tips for healthy houseplants</b><br>Joe Bagley, The Houseplant Doctor™       |
| <b>11.20am</b> | <b>Grow your own cut flowers</b><br>Sarah Hinchliffe, @north_and_flower                   |
| <b>12noon</b>  | <b>My organically growing gardening journey</b><br>Hannah Reid, @gingergrows1             |
| <b>12.40pm</b> | <b>Sustainable horticulture at RHS Bridgewater</b><br>Samara Salix, RHS Bridgewater       |
| <b>1.20pm</b>  | <b>Synergy in sustainability: mushrooms, beetles, and urban regeneration</b><br>Polyspore |

|                  |   |
|------------------|---|
| 2pm              | <b>Houseplant bingo</b><br>Michael Perry  |
| <b>Afternoon</b> |   |
| 3pm              | <b>Joe's top tips for healthy houseplants</b><br>Joe Bagley, The Houseplant Doctor™       |
| 3.40pm           | <b>Grow your own cut flowers</b><br>Sarah Hinchliffe, @north_and_flower                   |
| 4.40pm           | <b>My organically growing gardening journey</b><br>Hannah Reid, @gingergrows1             |
| 5pm              | <b>Urban meadows</b><br>Richard Scott and Christine Leung, ScouseFlowerHouse              |
| 5.40pm           | <b>Synergy in sustainability: mushrooms, beetles, and urban regeneration</b><br>Polyspore |
| 6pm              | <b>Houseplant bingo</b><br>Michael Perry  |

## SATURDAY 20<sup>th</sup> – Our Green Spaces

|                  |   |
|------------------|---|
| <b>Morning</b>   |   |
| 11am             | <b>Closing the loop on food: community growing in Collyhurst</b><br>Raddon Stephenson, Caritas                    |
| 11.30am          | <b>Skills development &amp; training opportunities for community gardeners</b><br>Helen Eaton, Myerscough College |
| 12noon           | <b>This city is a garden - reimagining the 'maintenance contract'</b><br>Pete Swift, Plant-IE                     |
| 12.30pm          | <b>Welcome to the National Garden Scheme</b><br>Laura Carstensen & Kattie Kincaid, NGS                            |
| 1pm              | <b>It all starts with an idea. FOIL -our story</b><br>Mila, Friends of Irlam Library                              |
| 1.30pm           | <b>How to successfully work with nature in urban environments</b><br>Dan Musaheb, Ardwick Climate Action          |
| 2pm              | <b>Creating Community Allotments</b><br>Joe Hunt, Blackleach Community Allotments                                 |
| <b>Afternoon</b> |   |
| 3pm              | <b>Welcome to the National Garden Scheme</b><br>Laura Carstensen & Kattie Kincaid, NGS                            |
| 3.30pm           | <b>Skills development &amp; training opportunities for community gardeners</b><br>Helen Eaton, Myerscough College |
| 4pm              | <b>How to successfully work with nature in urban environments</b><br>Dan Musaheb, Ardwick Climate Action          |
| 4.30pm           | <b>It all starts with an idea. FOIL -our story</b><br>Mila, Friends of Irlam Library                              |

|        |  |
|--------|--|
| 5pm    | <b>Closing the loop on food: community growing in Collyhurst</b><br>Raddon Stephenson, Caritas   |
| 5.30pm | <b>Creating community allotments</b><br>Joe Hunt, Blackleach Community Allotments  |
| 6pm    | <b>Real estate for the invertebrate - creating wildlife habitat for our busy urban environments</b><br>Andy Farrington, Plant Co-operative |

Sunday 21<sup>st</sup>

### SUNDAY 21<sup>st</sup> – Main Stage

#### Morning

|         |   |
|---------|---|
| 10.40am | <b>Bulb planting in small spaces</b><br>J.Parkers   |
| 11.20am | <b>Guiding green urban spaces; Castlefield Viaduct and beyond</b><br>Laura Nash, Senior Volunteering & Community Officer, Castlefield Viaduct, National Trust and Anne Beswick, Garden Volunteer, Castlefield Viaduct, National Trust |
| 12noon  | <b>Life on the lot: from newcomer to full blown allotmenteer!</b><br>Jenny Howarth, @Life_on_the_lot  |
| 12.40pm | <b>Joe's top tips for healthy houseplants</b><br>Joe Bagley, The Houseplant Doctor™   |
| 1.20pm  | <b>Plant-based careers</b><br>Leif Mann, RHS Bridgewater  |
| 2pm     | <b>Houseplant bingo</b><br>Michael Perry  |

#### Afternoon

|        |   |
|--------|---|
| 3pm    | <b>Joe's top tips for healthy houseplants</b><br>Joe Bagley, The Houseplant Doctor™   |
| 3.40pm | <b>Guiding green urban spaces; Castlefield Viaduct and beyond</b><br>Laura Nash, Senior Volunteering & Community Officer, Castlefield Viaduct, National Trust and Anne Beswick, Garden Volunteer, Castlefield Viaduct, National Trust |
| 4.40pm | <b>Life on the lot: from newcomer to full blown allotmenteer!</b><br>Jenny Howarth, @Life_on_the_lot  |

### SUNDAY 21<sup>st</sup> – Our Green Spaces

#### Morning

|         |   |
|---------|---|
| 11.30am | <b>Skills development &amp; training opportunities for community gardeners</b><br>Helen Eaton, Myerscough College |
| 12noon  | <b>Community neighbourhood projects</b><br>Bernard Pendleton, North West in Bloom                                 |
| 12.30pm | <b>Welcome to the National Garden Scheme</b><br>Maureen Sawyer & Laura Carstensen, NGS                            |

|                  |  |
|------------------|--|
| <b>2.30pm</b>    | <b>Community neighbourhood projects</b><br><i>Bernard Pendleton, North West in Bloom</i>                                 |
| <b>Afternoon</b> |  |
| <b>3pm</b>       | <b>Welcome to the National Garden Scheme</b><br><i>Maureen Sawyer &amp; Laura Carstensen, NGS</i>                        |
| <b>3.30pm</b>    | <b>Skills development &amp; training opportunities for community gardeners</b><br><i>Helen Eaton, Myerscough College</i> |

### Additional Information

**For more information please visit:** [The RHS Urban Show 2024 / RHS Gardening](#)

**For high resolution images on our image sharing site Iris, please visit:** [Iris](#)

Once you register you will be sent an email which will allow you to set up your password and access the site (make sure to check your spam folder). From there you will be able to access collections from the shows to download.

The RHS Shows PR Team can be reached at [showspr@rhs.org.uk](mailto:showspr@rhs.org.uk) or on the following numbers:

**Hattie Sherwood – 07970 138 319**

**Fariha Karim – 07786 708 260**

**Becky Parrock – 07734 961 384**

**Isobel Merriman – 07715 960 735**